



FURNITURE CATALOGUE



Ph. (08) 6209 2658
sales@ergoworx.com.au

Wangara 6065
Perth WA

WWW.ERGOWORX.COM.AU

CONTENTS

3-10	Reception and Lounge
11-16	Deluxe Rapid Infinity
17-21	Rapid Infinity
22	Infinity Accessories
23-24	Softwiring
25-28	Rapid Screen
29-31	Rapid Span
32-35	Tables
36-40	Height Adjustable Solutions
41-43	Rapid Vibe
44-46	Rapid Worker
47-49	Rapid Manager
50-53	Mesh Chairs
54-55	Operator Chairs
56-58	Executive Chairs
59-63	Breakout, Visitor Chairs and Stools
64	Chair and Screen Upholstery
65-66	Presentation Range
67	Accessories
68-70	Steel Storage
71	Office Storage
72	Mobile Storage
73-75	Lockers and Accessories

Your Rapidline product is delivered from distribution centres in Sydney, Melbourne, Brisbane and Perth, with a local customer service team in each location.

We not only deliver in these areas but also offer a full installation service.

Have a requirement for an office fitout?

Our in-house projects team can design any layout with Rapidline furniture specific to your requirements.

*We cannot guarantee colours shown in this catalogue are the exact true representation of product colours.
Specifications subject to change.*





RECEPTION & LOUNGE

URBAN RECEPTION COUNTER

Natural White with driftwood wrap around cowl feature panel, built in 3 drawer under-desk pedestal, CPU & storage cupboard with 2 x chrome cable entry hole covers.

URC NW/DW

Finish	Natural White
Width	2200mm
Depth	800mm
Height	1150mm
Counter Height	750mm
Warranty	5 Years



MODULAR RECEPTION COUNTER

Create your ideal reception counter by choosing between the MOD1 Full Height and MOD2 Glass Top pieces, configured in any mix and match layout to suit your space.

MOD1NW · Full Height Module

Finish	Natural White
Width	1339mm
Depth	800mm
Height	1160mm
Counter Height	730mm
Warranty	5 Years

MOD2NW · Glass Top Module

Finish	Natural White
Width	1339mm
Depth	800mm
Height	935mm
Counter Height	730mm
Warranty	5 Years

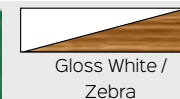


MARQUEE RECEPTION COUNTER

Gloss White veneer with zebra veneer front columns, gloss white top, 2 x chrome cable entry hole covers with brush insulators, built in 3 drawer under-desk pedestal, CPU & storage cupboard.

MRC GW / ZB

Finish	Gloss White
Width	2400mm
Depth	835mm
Height	1150mm
Counter Height	750mm
Warranty	5 Years



RC1809 RECEPTION COUNTER

Natural White counter with black powdercoated perforated cowl and matching kickplate.

RC1809 NW

Finish	Natural White
Width	1800mm
Depth	900mm
Height	1170mm
Counter Height	750mm
Warranty	5 Years



FLOW RECEPTION COUNTER

Curved reception counter with glass feature on side and high reception hob for privacy.

NCT1160

Finish	Beech
Width	2400 x 1600mm
Depth	800mm
Height	1160mm
Counter Height	730mm
Warranty	5 Years



Beech



5-O RECEPTION COUNTER

Gloss white veneer all over reception counter with chrome trim detail on front panel
2 X chrome cable entry hole covers with brush insulators.

RC5-O GW

Finish	Gloss White
Width	2400mm
Depth	848mm
Height	1100mm
Counter Height	750mm
Warranty	5 Years



Gloss White



RAPID BLOOM VERTICAL GARDEN

Bring nature into the office with a vertical garden, available in black or white, with 8 x 150mm diameter round pots and 20kg of polished stones. **Plants not included.**

SRBVG BK · SRBVG WH

Finish	White or Black
Width	395mm
Depth	210mm
Height	1940mm
Weight	40kg
Warranty	5 Years



White



Black

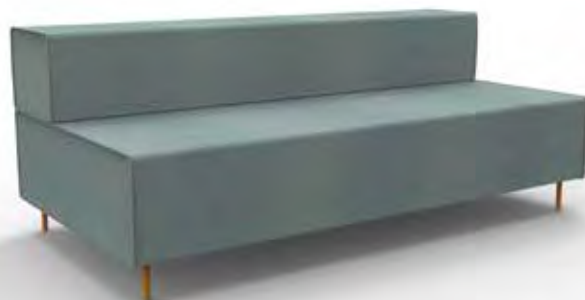


FLEXI LOUNGE EXAMPLE CONFIGURATIONS



925mm W x 940mm D x 710mm H

SINGLE SEAT AND BACK REST - FL1



1830mm W x 940mm D x 710mm H

TRIPLE SEAT AND BACK REST - FL2

Flexi Lounge Range

Flexi Lounge allows you to create a lounge area your way. Mix and match sizes and colours along walls, around corners or in the middle of a space.

Finishes



Light Blue



Charcoal Ash



480mm W x 480mm W x 430mm H

OTTOMAN - FLOTTO



550mm W x 400mm H

PILLOW - FLPL



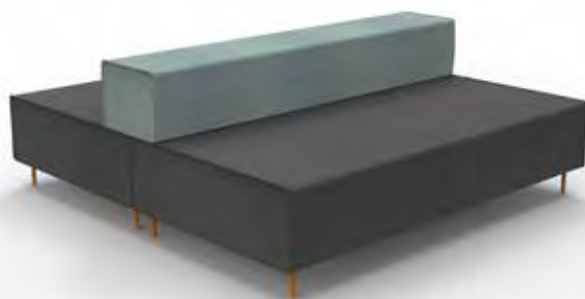
400mm W x 400mm H

CUSHION - FLCU



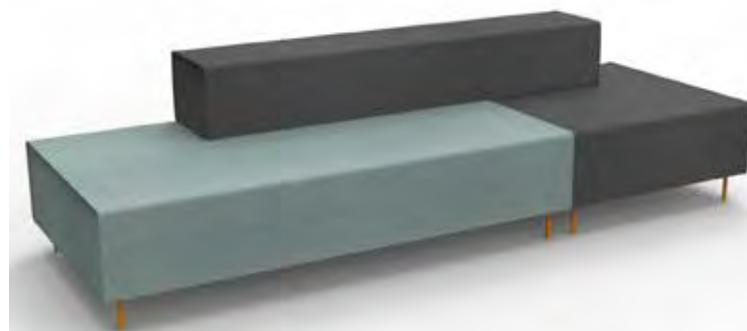
925mm W x 1880mm D x 710mm H

SINGLE BACK TO BACK - FL3



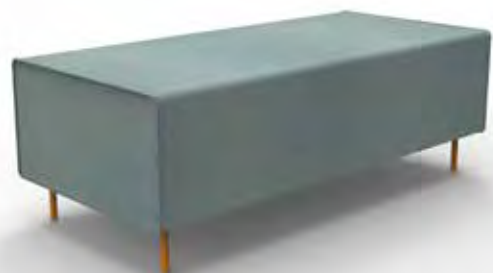
1830mm W x 1880mm D x 710mm H

TRIPLE BACK TO BACK - FL4



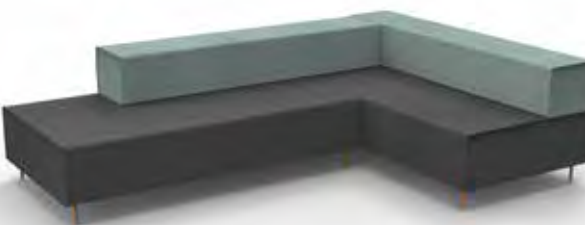
2755mm W x 940mm D x 710mm H

STRETCH - FL5



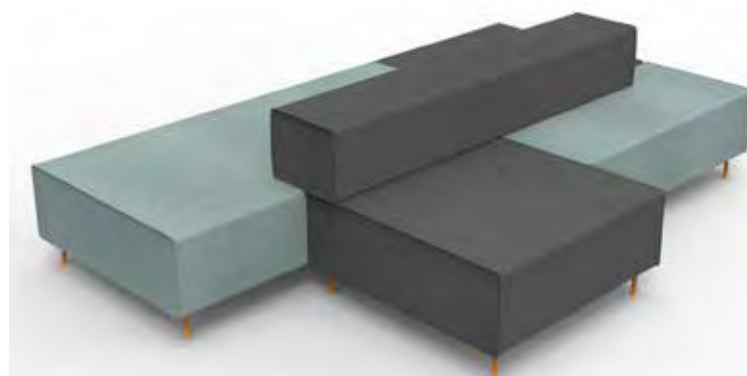
1245mm W x 585mm D x 430mm H

RETURN LOUNGE - FLRL



2770mm W x 1830mm D x 710mm H

CORNER - FL6



2755mm W x 1880mm D x 710mm H

ISLAND - FL7

CARDINAL SINGLE LOUNGE

Single arm chair in full fabric upholstery with removal back cushion. Black powdercoated solid tube frame and button feet.

CSA

Seat Width	450mm
Seat Depth	480mm
Seat Height	450mm
Back Height	530mm
Weight Rating	Up to 150kg
Warranty	5 Years



NEW

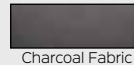


CLOVER LOUNGE CHAIR

Full fabric single lounge chair with stylish tapered back rest and angled cut arm rests.

CLOVER

Seat Width	530mm
Seat Depth	460mm
Seat Height	445mm
Back Height	400mm
Weight Rating	Up to 130kg
Warranty	5 Years



NEW



CARDINAL TWO SEATER LOUNGE

Two seater arm lounge in full fabric upholstery with removal back cushion and black powdercoated solid tube frame.

CSA 2 SEATER

Seat Width	1000mm
Seat Depth	510mm
Seat Height	440mm
Back Height	530mm
Weight Rating	Up to 150kg
Warranty	5 Years



NEW



SPLASH CUBE - SINGLE CHAIR

Contemporary style cube shaped chair with stylish chrome sled base underframe.

SPLASHCUBE

Seat Width	460mm
Seat Depth	520mm
Seat Height	500mm
Back Height	330mm
Weight Rating	Up to 120kg
Warranty	3 Years



Red Fabric



The reception area is so important. It is the first contact with your customer, so create a welcoming, comfortable space with Rapidline furniture. Make the right first impression.

RECEPTION & LOUNGE

SPACE TUB 1 - SINGLE TUB CHAIR

Single tub chair in compact size with soft foam seat. Black polyurethane leather upholstery.

SPTUB1

Seat Width	540mm
Seat Depth	430mm
Seat Height	446mm
Back Height	370mm
Weight Rating	Up to 120kg
Warranty	3 Years

Black PU



SPACE EXECUTIVE TUB - SINGLE TUB CHAIR

Ideal modern, comfortable seating option in receptions, meeting rooms and breakout areas.

SPEXEC TUB

Seat Width	480mm
Seat Depth	470mm
Seat Height	480mm
Back Height	390mm
Weight Rating	Up to 120kg
Warranty	3 Years

Black PU



VENUS OTTOMAN

Black polyurethane leather ottoman with classic button finish and stainless steel frame.

VENUS ST

Seat Width	1030mm
Seat Depth	540mm
Seat Height	410mm
Weight Rating	Up to 130kg
Warranty	3 Years

Black PU



VENUS 1 - SINGLE LOUNGE SEAT

Classic designed seat with distinctive button finish in black polyurethane leather and stainless steel frame.

VENUS1

Seat Width	630mm
Seat Depth	500mm
Seat Height	420mm
Back Height	400mm
Weight Rating	Up to 150kg
Warranty	3 Years

Black PU



VENUS 2 - TWO SEATER LOUNGE

Ideal two seater lounge for classic style seating option in receptions, meeting rooms and breakout areas.

VENUS2

Seat Width	1120mm
Seat Depth	500mm
Seat Height	420mm
Back Height	400mm
Weight Rating	Up to 200kg
Warranty	3 Years

Black PU



VENUS 3 - THREE SEATER LOUNGE

Soft black polyurethane leather material for easy cleaning and maintenance. Spacious 3 seater lounge with matching ottoman available.

VENUS3

Seat Width	1770mm
Seat Depth	500mm
Seat Height	420mm
Back Height	400mm
Weight Rating	Up to 300kg
Warranty	3 Years

Black PU



ROUND COFFEE TABLE

Round 600mm diameter coffee table with flat disc base in choice of top and frame colours.

CCT6

Table Top Diameter	600mm	Top Finishes
Table Top Height	455mm	Natural White, Beech, Cherry or Natural Oak
Table Frame Height	430mm	Base Finishes
Warranty	5 Years	Stainless Steel, White or Black



BUDGET COFFEE TABLE

Budget coffee table beech top with ironstone base.

CT96

Table Top Width	900mm
Table Top Depth	600mm
Table Top Height	420mm
Warranty	5 Years



Beech Top

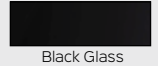


BLACK GLASS COFFEE TABLE

Black glass and chrome frame coffee table available in two sizes, choose a square or rectangular shape to suit your space.

AGT66 and AGT126

Table Top Width	600mm or 1200mm
Table Top Depth	600mm
Table Top Height	450mm
Warranty	5 Years



Black Glass

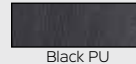


SPACE 1 - SINGLE LOUNGE SEAT

Soft, comfortable single lounge in black polyurethane leather finish and stylish chrome wrap around frame.

SPACE1

Seat Width	550mm
Seat Depth	515mm
Seat Height	445mm
Back Height	310mm
Weight Rating	Up to 150kg
Warranty	3 Years



Black PU

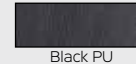


SPACE 2 - TWO SEATER LOUNGE

Ideal two seater lounge for modern, yet comfortable seating option in receptions, meeting rooms and breakout areas.

SPACE2

Seat Width	1110mm
Seat Depth	515mm
Seat Height	445mm
Back Height	310mm
Weight Rating	Up to 200kg
Warranty	3 Years



Black PU

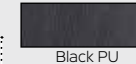


SPACE 3 - THREE SEATER LOUNGE

Soft black polyurethane leather material allows for easy cleaning and maintenance. Spacious 3 seater lounge in modern and stylish design.

SPACE3

Seat Width	1670mm
Seat Depth	515mm
Seat Height	445mm
Back Height	310mm
Weight Rating	Up to 300kg
Warranty	3 Years



Black PU



RECEPTION & LOUNGE

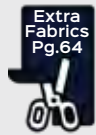
MARS ROUND OTTOMAN

Round 550mm diameter ottoman in soft fabric upholstery with concealed black feet.

MARS R

Ottoman Width	550mm
Ottoman Depth	550mm
Ottoman Height	450mm
Weight Rating	Up to 130kg
Warranty	5 Years

Charcoal Fabric



MARS SQUARE OTTOMAN

Square 550mm x 550mm ottoman in soft fabric upholstery with concealed black feet.

MARS S

Ottoman Width	550mm
Ottoman Depth	550mm
Ottoman Height	450mm
Weight Rating	Up to 130kg
Warranty	5 Years

Charcoal Fabric



MARS TRIANGLE OTTOMAN

Triangle 550mm x 550mm ottoman in soft fabric upholstery with concealed black feet.

MARS T

Ottoman Width	550mm
Ottoman Depth	550mm
Ottoman Height	450mm
Weight Rating	Up to 130kg
Warranty	5 Years

Charcoal Fabric



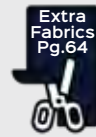
CONNECT 2 OTTOMAN

Round ottoman with white powdercoated steel underbase storage and black fabric upholstered seat cushion.

CONNECT 2

Ottoman Width	320mm
Ottoman Depth	320mm
Ottoman Height	420mm
Weight Rating	Up to 110kg
Warranty	3 Years

Black Fabric



All ottomans available in an extended range of colours.
See page 64.

Use ottoman seats in a variety of areas.

Create an informal breakout space, join them in clusters for multiple sitting, or as a reception or a visitors seat for short time frames.





DELUXE RAPID INFINITY

SINGLE SIDED WORKSTATIONS



D-IPLS1P1875 NO / WS · 1 Person Profile Leg

Create a space efficient workspace with Deluxe Rapid Infinity, designed to maximise leg space, workstation strength and user communication.

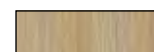
NEW



Single Sided Workstation Options

- Choose the number of persons required for your run of desks
- Choose from the Profile or Loop end leg styles
- Choose between 1200mm, 1500mm or 1800mm individual desk top widths x **750mm depth**
- Choose between black or white powdercoated frames and legs
- Choose between natural oak or natural white scalloped top

Top Finishes



Natural Oak



Natural White

Leg and Frame Finishes



Black Powdercoat



White Powdercoat

Profile Leg

*Overall Measurements

Product Code	Users	Width	Depth	Height
D-IPLS1P1275	1	1200mm	750mm	730mm
D-IPLS1P1575	1	1500mm	750mm	730mm
D-IPLS1P1875	1	1800mm	750mm	730mm
D-IPLS2P1275	2	2400mm	750mm	730mm
D-IPLS2P1575	2	3000mm	750mm	730mm
D-IPLS2P1875	2	3600mm	750mm	730mm
D-IPLS3P1275	3	3600mm	750mm	730mm
D-IPLS3P1575	3	4500mm	750mm	730mm
D-IPLS3P1875	3	5400mm	750mm	730mm

Loop Leg

D-IPLS1P1275	1	1200mm	750mm	730mm
D-IPLS1P1575	1	1500mm	750mm	730mm
D-IPLS1P1875	1	1800mm	750mm	730mm
D-IPLS2P1275	2	2400mm	750mm	730mm
D-IPLS2P1575	2	3000mm	750mm	730mm
D-IPLS2P1875	2	3600mm	750mm	730mm
D-IPLS3P1275	3	3600mm	750mm	730mm
D-IPLS3P1575	3	4500mm	750mm	730mm
D-IPLS3P1875	3	5400mm	750mm	730mm



D-IPLS2P1875 NW / BL · 2 Person Loop Leg



D-IPLS3P1875 NO / BL · 3 Person Profile Leg



SINGLE SIDED WORKSTATIONS WITH SCREENS



D-IPLSWS1P1875 NO / BL · 1 Person Loop Leg



D-IPLSWS2P1875 NO / WS · 2 Person Profile Leg



D-IPLSWS3P1875 NW / BL · 3 Person Loop Leg

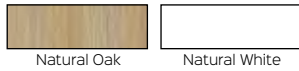


SINGLE SIDED WORKSTATIONS WITH SCREENS

Single Sided Workstations with Screens Options

- Choose the number of persons required for your run of desks
- Choose from the Profile or Loop end leg styles
- Choose between 1200mm, 1500mm or 1800mm individual desk top widths x **750mm depth**
- Choose between black or white powdercoated frames and legs
- Choose between natural oak or natural white scalloped top
- Choose between black fabric screen with white frame or grey fabric screen with black frame
- Comes with 500mm high x 30mm thick fabric screen

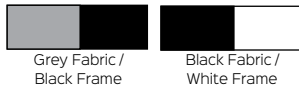
Top Finishes



Leg and Frame Finishes



Screen Finishes



Profile Leg

*Overall Measurements

Product Code	Users	Width	Depth	Height
D-IPLSWS1P1275	1	1200mm	780mm	1200mm
D-IPLSWS1P1575	1	1500mm	780mm	1200mm
D-IPLSWS1P1875	1	1800mm	780mm	1200mm
D-IPLSWS2P1275	2	2400mm	780mm	1200mm
D-IPLSWS2P1575	2	3000mm	780mm	1200mm
D-IPLSWS2P1875	2	3600mm	780mm	1200mm
D-IPLSWS3P1275	3	3600mm	780mm	1200mm
D-IPLSWS3P1575	3	4500mm	780mm	1200mm
D-IPLSWS3P1875	3	5400mm	780mm	1200mm

Loop Leg

D-ILLSWS1P1275	1	1200mm	780mm	1200mm
D-ILLSWS1P1575	1	1500mm	780mm	1200mm
D-ILLSWS1P1875	1	1800mm	780mm	1200mm
D-ILLSWS2P1275	2	2400mm	780mm	1200mm
D-ILLSWS2P1575	2	3000mm	780mm	1200mm
D-ILLSWS2P1875	2	3600mm	780mm	1200mm
D-ILLSWS3P1275	3	3600mm	780mm	1200mm
D-ILLSWS3P1575	3	4500mm	780mm	1200mm
D-ILLSWS3P1875	3	5400mm	780mm	1200mm

DOUBLE SIDED WORKSTATIONS

Double Sided Workstation Options

- Choose the number of persons required for your double sided run of desks
- Choose from the Profile or Loop end leg styles
- Choose between 1200mm, 1500mm or 1800mm individual desk top widths x **750mm depth**
- Choose between black or white powdercoated frames and legs
- Choose between natural oak or natural white scalloped top
- Choose to have optional infill rail to fill centre gap - see Infinity accessories page

Top Finishes



Leg and Frame Finishes



The Deluxe Rapid Infinity is a modular system that can suit any number of users required, contact us today for more information.



Profile Leg

*Overall Measurements

Product Code	Users	Width	Depth	Height
D-IPLD2P1275	2	1200mm	1530mm	730mm
D-IPLD2P1575	2	1500mm	1530mm	730mm
D-IPLD2P1875	2	1800mm	1530mm	730mm
D-IPLD4P1275	4	2400mm	1530mm	730mm
D-IPLD4P1575	4	3000mm	1530mm	730mm
D-IPLD4P1875	4	3600mm	1530mm	730mm
D-IPLD6P1275	6	3600mm	1530mm	730mm
D-IPLD6P1575	6	4500mm	1530mm	730mm
D-IPLD6P1875	6	5400mm	1530mm	730mm

Loop Leg

D-ILLD2P1275	2	1200mm	1530mm	730mm
D-ILLD2P1575	2	1500mm	1530mm	730mm
D-ILLD2P1875	2	1800mm	1530mm	730mm
D-ILLD4P1275	4	2400mm	1530mm	730mm
D-ILLD4P1575	4	3000mm	1530mm	730mm
D-ILLD4P1875	4	3600mm	1530mm	730mm
D-ILLD6P1275	6	3600mm	1530mm	730mm
D-ILLD6P1575	6	4500mm	1530mm	730mm
D-ILLD6P1875	6	5400mm	1530mm	730mm



D-IPLD2P1875 NO / BL · 2 Person Profile Leg



D-IPLD4P1875 NW / BL · 4 Person Loop Leg



D-IPLD6P1875 NO / WS · 6 Person Profile Leg

DOUBLE SIDED WORKSTATIONS WITH SCREENS



D-IPLDWS2P1875 NO / WS · 2 Person Profile Leg



D-ILLDWS4P1875 NW / WS · 4 Person Loop Leg

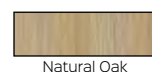


D-IPLDWS6P1875 NO / BL · 6 Person Profile Leg

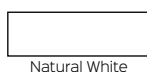
Double Sided Workstations with Screens Options

- Choose the number of persons required for your run of desks
- Choose from the Profile or Loop end leg styles
- Choose between 1200mm, 1500mm or 1800mm individual desk top widths x **750mm depth**
- Choose between black or white powdercoated frames and legs
- Choose between natural oak or natural white scalloped top
- Choose between black fabric screen with white frame or grey fabric screen with black frame
- Comes with 500mm high x 30mm thick fabric screen

Top Finishes



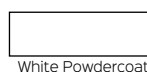
Natural Oak



Natural White



Black Powdercoat



White Powdercoat

Leg and Frame Finishes

Screen Finishes



Grey Fabric / Black Frame



Black Fabric / White Frame



Profile Leg

*Overall Measurements

Product Code	Users	Width	Depth	Height
D-IPLDWS2P1275	2	1200mm	1530mm	1200mm
D-IPLDWS2P1575	2	1500mm	1530mm	1200mm
D-IPLDWS2P1875	2	1800mm	1530mm	1200mm
D-IPLDWS4P1275	4	2400mm	1530mm	1200mm
D-IPLDWS4P1575	4	3000mm	1530mm	1200mm
D-IPLDWS4P1875	4	3600mm	1530mm	1200mm
D-IPLDWS6P1275	6	3600mm	1530mm	1200mm
D-IPLDWS6P1575	6	4500mm	1530mm	1200mm
D-IPLDWS6P1875	6	5400mm	1530mm	1200mm

Loop Leg

D-ILLDWS2P1275	2	1200mm	1530mm	1200mm
D-ILLDWS2P1575	2	1500mm	1530mm	1200mm
D-ILLDWS2P1875	2	1800mm	1530mm	1200mm
D-ILLDWS4P1275	4	2400mm	1530mm	1200mm
D-ILLDWS4P1575	4	3000mm	1530mm	1200mm
D-ILLDWS4P1875	4	3600mm	1530mm	1200mm
D-ILLDWS6P1275	6	3600mm	1530mm	1200mm
D-ILLDWS6P1575	6	4500mm	1530mm	1200mm
D-ILLDWS6P1875	6	5400mm	1530mm	1200mm

SINGLE CORNER WORKSTATION



D-ILLCWS1P181575 NW / BL · 1800mm x 1500mm Loop Leg



D-IPLCWS1P181875 NO / WS · 1800mm x 1800mm Profile Leg



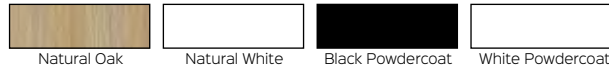
D-ILLCWS1P181875 NO / BL · 1800mm x 1800mm Loop Leg

SINGLE CORNER WORKSTATION

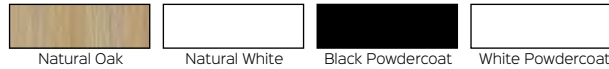
Single Corner Workstation Options

- Choose from the Profile or Loop end leg styles
- Choose between 1500 x 1500mm, 1800 x 1500mm or 1800 x 1800mm individual corner desk top widths x **750mm depth**
- Choose between black or white powdercoated frames and end legs
- Choose between natural oak or natural white top finishes
- All corner tops come with cable access hole

Top Finishes



Leg and Frame Finishes



Profile Leg

*Overall Measurements

Product Code	Users	Width	Depth	Height
D-IPLCWSIP151575	1	1500 x 1500mm	750mm	730mm
D-IPLCWSIP181575	1	1800 x 1500mm	750mm	730mm
D-IPLCWSIP181875	1	1800 x 1800mm	750mm	730mm

Loop Leg

Product Code	Users	Width	Depth	Height
D-ILLCWSIP151575	1	1500 x 1500mm	750mm	730mm
D-ILLCWSIP181575	1	1800 x 1500mm	750mm	730mm
D-ILLCWSIP181875	1	1800 x 1800mm	750mm	730mm

The Deluxe Rapid Infinity Corner Workstation is a modular system that can suit any number of users required, with or without screens and accessories.



Contact us today for more information.

4-PERSON POD OF CORNER WORKSTATIONS WITH SCREENS



D-ILLCWS4PWS181575 NO / WS · 4 Person Loop Leg



D-IPLCWS4PWS181875 NW / BL · 4 Person Profile Leg



D-ILLCWS4PWS181875 NO / BL · 4 Person Loop Leg

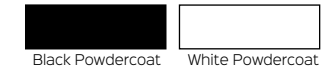
4-Person Corner Workstation Pod With Screens Options

- Choose from the Profile or Loop end leg styles to suit your office design and style
- Choose between 1500 x 1500mm, 1800 x 1500mm or 1800 x 1800mm individual corner desk top widths x **750mm depth**
- Choose between natural oak or natural white top finishes
- Choose between black or white powdercoated frames and legs
- Choose between black fabric screen with white frame or grey fabric screen with black frame. Fabric screen is 500mm high x 30mm thick

Top Finishes



Leg and Frame Finishes



Screen Finishes



Profile Leg

*Overall Measurements

Product Code	Users	Width	Depth	Height
D-IPLCWS4P151575	4	3000 x 3000mm	1500mm	1200mm
D-IPLCWS4P181575	4	3600 x 3000mm	1500mm	1200mm
D-IPLCWS4P181875	4	3600 x 3600mm	1500mm	1200mm

Loop Leg

D-ILLCWS4P151575	4	3000 x 3000mm	1500mm	1200mm
D-ILLCWS4P181575	4	3600 x 3000mm	1500mm	1200mm
D-ILLCWS4P181875	4	3600 x 3600mm	1500mm	1200mm

Why Choose Deluxe Infinity?




- Black or white leg options
- 750mm deep work top for more space
- Natural white or natural oak top finish options
- Scaloped cable access for straight work tops
- Grey screen available with black frame

DELUXE RAPID INFINITY STORAGE

SWING DOOR CUPBOARDS

Deluxe Infinity lockable swing door cupboards finished in natural white or natural oak laminate with black rigid edging.

IFSD96, IFSD1245, IFSD1545 and IFSD1845




Size	2 Door - 900 x 600mm 3 Door - 1200 x 450mm or 1500 x 450mm 4 Door - 1800 x 450mm	 Natural Oak
Height	730mm	 Natural White
Features	Lockable, shark nose feature on tops of doors for easy opening, soft close hinges, black rigid edging, adjustable levelling feet	



BOOKCASES

Bookcase with adjustable shelves and black edging feature, aluminium tapered legs, made from E1 rated melamine board.

IFBK12 and IFBK18

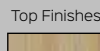
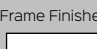
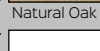
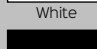
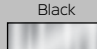
Size	900 x 315mm	 Natural Oak
Height	1200mm or 1800mm	 Natural White
Features	25mm thick adjustable shelves, black edging feature and stylish aluminium tapered legs	
Warranty	5 Years	



SQUARE TABLES

Modern square meeting table with flat disc base with choice of frame finishes.

CBT990

Top Size	900 x 900mm	Top Finishes	 Natural Oak	Frame Finishes	 White
Table Height	755mm				
Top Finishes	Natural Oak or Natural White	 Natural White		 Black	
Frame	White, Black or Stainless			 Stainless Steel	
Finishes	Steel				
Warranty	5 Years				



ROUND TABLES

Round meeting table available in 2 different top sizes and colours with flat disc base with choice of frame finishes.

CBT9 and CBT12

Top Size	900mm or 1200mm Diameter	Top Finishes	 Natural Oak	Frame Finishes	 White
Table Height	755mm				
Top Finishes	Natural Oak or Natural White	 Natural White		 Black	
Frame	White, Black or Stainless			 Stainless Steel	
Finishes	Steel				
Warranty	5 Years				





SINGLE SIDED WORKSTATIONS



IPLS1P187ST NW · 1 Person Profile Leg with Scalloped Top



IPLS2P187 B · 2 Person Profile Leg with Cable Entry Holes



ILLS3P187 NW · 3 Person Loop Leg with Cable Entry Holes



Create a space efficient workspace with Rapid Infinity, designed to maximise leg space, workstation strength and user communication.

Single Sided Workstation Options

- Choose the number of persons required for your run of desks
- Choose from the Profile or Loop end leg styles
- Choose between 1200mm, 1500mm or 1800mm individual desk top widths x 700mm depth
- Choose between natural white with cable entry holes, beech with cable entry holes or natural white scalloped top finishes

Top Finishes



Natural White
Cable Entry Holes



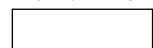
Beech
Cable Entry Holes



Natural White
Scalloped



Frame Finish



White Powdercoat

Profile Leg

*Overall Measurements

Product Code	Users	Width	Depth	Height
IPLS1P127	1	1200mm	700mm	730mm
IPLS1P157	1	1500mm	700mm	730mm
IPLS1P187	1	1800mm	700mm	730mm
IPLS2P127	2	2400mm	700mm	730mm
IPLS2P157	2	3000mm	700mm	730mm
IPLS2P187	2	3600mm	700mm	730mm
IPLS3P127	3	3600mm	700mm	730mm
IPLS3P157	3	4500mm	700mm	730mm
IPLS3P187	3	5400mm	700mm	730mm

Loop Leg

ILLS1P127	1	1200mm	700mm	730mm
ILLS1P157	1	1500mm	700mm	730mm
ILLS1P187	1	1800mm	700mm	730mm
ILLS2P127	2	2400mm	700mm	730mm
ILLS2P157	2	3000mm	700mm	730mm
ILLS2P187	2	3600mm	700mm	730mm
ILLS3P127	3	3600mm	700mm	730mm
ILLS3P157	3	4500mm	700mm	730mm
ILLS3P187	3	5400mm	700mm	730mm

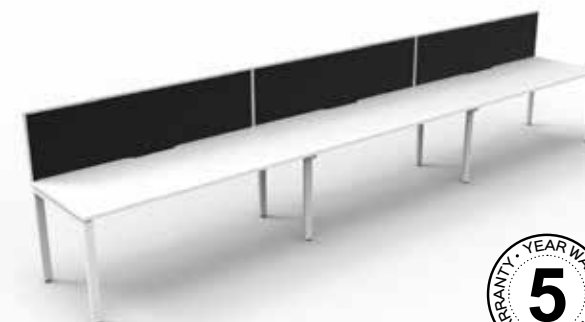
SINGLE SIDED WORKSTATIONS WITH SCREENS



ILLSWS1P187 NW · 1 Person Loop Leg with Cable Entry Holes



IPLSWS2P187 B · 2 Person Profile Leg with Cable Entry Holes



IPLSWS3P187ST NW · 3 Person Loop Leg with Scalloped Top



SINGLE SIDED WORKSTATIONS WITH SCREENS

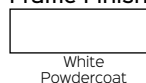
Single Sided Workstations with Screens Options

- Choose the number of persons required for your run of desks
- Choose from the Profile or Loop end leg styles
- Choose between 1200mm, 1500mm or 1800mm individual desk top widths x 700mm depth
- Choose between natural white with cable entry holes, beech with cable entry holes or natural white scalloped top finishes
- Comes with 500mm high x 30mm thick black fabric screen

Top Finishes



Frame Finish



Screen Finish



The Rapid Infinity is a modular system that can suit any number of users required, contact us today for more information.

Profile Leg

*Overall Measurements

Product Code	Users	Width	Depth	Height
IPLSWS1P127	1	1200mm	730mm	1200mm
IPLSWS1P157	1	1500mm	730mm	1200mm
IPLSWS1P187	1	1800mm	730mm	1200mm
IPLSWS2P127	2	2400mm	730mm	1200mm
IPLSWS2P157	2	3000mm	730mm	1200mm
IPLSWS2P187	2	3600mm	730mm	1200mm
IPLSWS3P127	3	3600mm	730mm	1200mm
IPLSWS3P157	3	4500mm	730mm	1200mm
IPLSWS3P187	3	5400mm	730mm	1200mm

Loop Leg

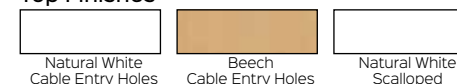
ILLSWS1P127	1	1200mm	730mm	1200mm
ILLSWS1P157	1	1500mm	730mm	1200mm
ILLSWS1P187	1	1800mm	730mm	1200mm
ILLSWS2P127	2	2400mm	730mm	1200mm
ILLSWS2P157	2	3000mm	730mm	1200mm
ILLSWS2P187	2	3600mm	730mm	1200mm
ILLSWS3P127	3	3600mm	730mm	1200mm
ILLSWS3P157	3	4500mm	730mm	1200mm
ILLSWS3P187	3	5400mm	730mm	1200mm

DOUBLE SIDED WORKSTATIONS

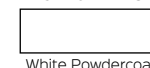
Double Sided Workstation Options

- Choose the number of persons required for your double sided run of desks
- Choose from the Profile or Loop end leg styles
- Choose between 1200mm, 1500mm or 1800mm individual desk top widths x 700mm depth
- Choose between natural white with cable entry holes, beech with cable entry holes or natural white scalloped top finishes
- Choose to have optional infill rail to fill centre gap - see Infinity accessories page

Top Finishes



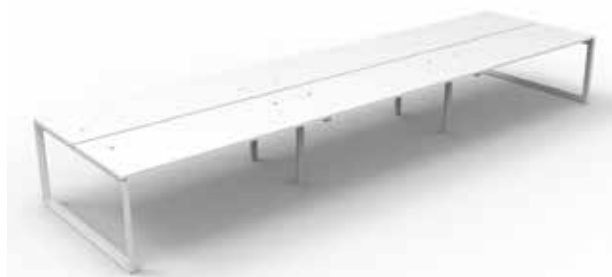
Frame Finish



IPLD2P187ST NW · 2 Person Profile Leg with Scalloped Top



ILLD4P187 B · 4 Person Loop Leg with Cable Entry Holes



ILLD6P187 NW · 6 Person Loop Leg with Cable Entry Holes

Profile Leg

*Overall Measurements

Product Code	Users	Width	Depth	Height
IPLD2P127	2	1200mm	1430mm	730mm
IPLD2P157	2	1500mm	1430mm	730mm
IPLD2P187	2	1800mm	1430mm	730mm
IPLD4P127	4	2400mm	1430mm	730mm
IPLD4P157	4	3000mm	1430mm	730mm
IPLD4P187	4	3600mm	1430mm	730mm
IPLD6P127	6	3600mm	1430mm	730mm
IPLD6P157	6	4500mm	1430mm	730mm
IPLD6P187	6	5400mm	1430mm	730mm

Loop Leg

ILLD2P127	2	1200mm	1430mm	730mm
ILLD2P157	2	1500mm	1430mm	730mm
ILLD2P187	2	1800mm	1430mm	730mm
ILLD4P127	4	2400mm	1430mm	730mm
ILLD4P157	4	3000mm	1430mm	730mm
ILLD4P187	4	3600mm	1430mm	730mm
ILLD6P127	6	3600mm	1430mm	730mm
ILLD6P157	6	4500mm	1430mm	730mm
ILLD6P187	6	5400mm	1430mm	730mm

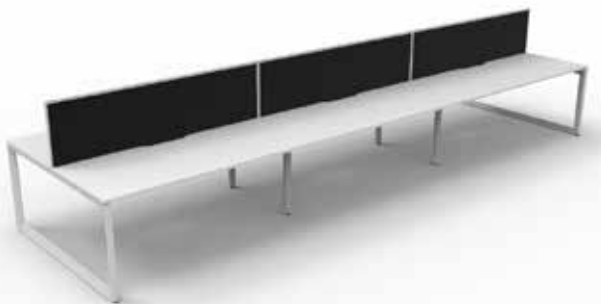
DOUBLE SIDED WORKSTATIONS WITH SCREENS



ILLDWS2P187 NW · 2 Person Loop Leg with Cable Entry Holes



IPLDWS4P187 B · 4 Person Profile Leg with Cable Entry Holes



ILLDWS6P187ST NW · 6 Person Loop Leg with Scalloped Top

Double Sided Workstations with Screens Options

- Choose the number of persons required for your double sided run of desks
- Choose from the Profile or Loop end leg styles
- Choose between 1200mm, 1500mm or 1800mm individual desk top widths x 700mm depth
- Choose between natural white with cable entry holes, beech with cable entry holes or natural white scalloped top finishes
- Comes with 500mm high x 30mm thick black fabric screen

Top Finishes



Natural White
Cable Entry Holes



Beech
Cable Entry Holes



Natural White
Scalloped



Frame Finish



White
Powdercoat

Screen Finish



Black Fabric /
White Frame



Profile Leg

*Overall Measurements

Product Code	Users	Width	Depth	Height
IPLDWS2P127	2	1200mm	1430mm	1200mm
IPLDWS2P157	2	1500mm	1430mm	1200mm
IPLDWS2P187	2	1800mm	1430mm	1200mm
IPLDWS4P127	4	2400mm	1430mm	1200mm
IPLDWS4P157	4	3000mm	1430mm	1200mm
IPLDWS4P187	4	3600mm	1430mm	1200mm
IPLDWS6P127	6	3600mm	1430mm	1200mm
IPLDWS6P157	6	4500mm	1430mm	1200mm
IPLDWS6P187	6	5400mm	1430mm	1200mm

Loop Leg

ILLDWS2P127	2	1200mm	1430mm	1200mm
ILLDWS2P157	2	1500mm	1430mm	1200mm
ILLDWS2P187	2	1800mm	1430mm	1200mm
ILLDWS4P127	4	2400mm	1430mm	1200mm
ILLDWS4P157	4	3000mm	1430mm	1200mm
ILLDWS4P187	4	3600mm	1430mm	1200mm
ILLDWS6P127	6	3600mm	1430mm	1200mm
ILLDWS6P157	6	4500mm	1430mm	1200mm
ILLDWS6P187	6	5400mm	1430mm	1200mm

SINGLE CORNER WORKSTATION



IPLCWS1P1815 NW · 1800 x 1500 Profile Leg



ILLCWS1P1818 B · 1800 x 1800 Loop Leg



IPLCWS1P1818 NW · 1800 x 1800 Profile Leg

SINGLE CORNER WORKSTATION

Single Corner Workstation Options

- Choose from the Profile or Loop end leg styles
- Choose between 1500mm x 1500mm, 1800mm x 1500mm or 1800mm x 1800mm individual corner desk top widths x 700mm depth
- Choose between natural white top with a single cable entry hole or beech top with a single cable entry hole

Top Finishes



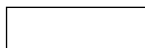
Natural White
Cable Entry Holes



Beech
Cable Entry Holes



Frame Finish



White
Powdercoat

Profile Leg

*Overall Measurements

Product Code	Users	Width	Depth	Height
IPLCWS1P15157	1	1500x 1500mm	700mm	730mm
IPLCWS1P18157	1	1800x 1500mm	700mm	730mm
IPLCWS1P18187	1	1800x 1800mm	700mm	730mm

Loop Leg

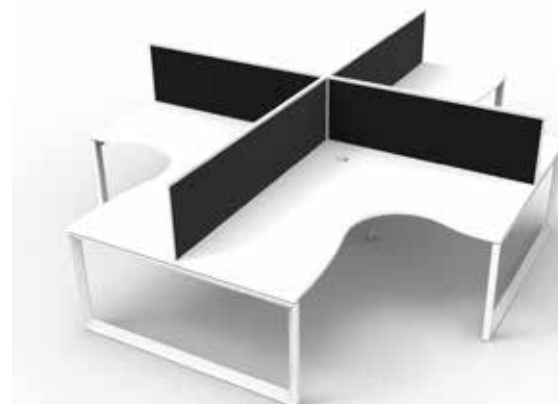
Product Code	Users	Width	Depth	Height
ILLCWS1P15157	1	1500x 1500mm	700mm	730mm
ILLCWS1P18157	1	1800x 1500mm	700mm	730mm
ILLCWS1P18187	1	1800x 1800mm	700mm	730mm

The Rapid Infinity Corner Workstation is a modular system that can suit any number of users required, with or without screens and accessories.



Contact us today for more information.

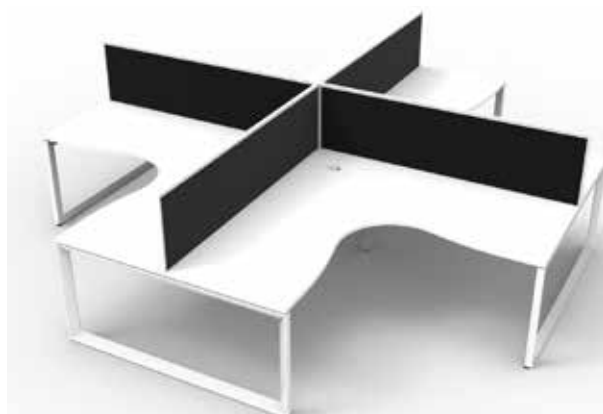
4-PERSON POD OF CORNER WORKSTATIONS WITH SCREENS



ILLCWS4PWS1815 NW · 1800 x 1500 4-Person Loop Leg



IPLCWS4PWS1818 B · 1800 x 1800 4-Person Profile Leg



ILLCWS4PWS1818 NW · 1800 x 1800 4-Person Loop Leg

4-Person Corner Workstation Pod With Screens Options

- Choose from the Profile or Loop end leg styles to suit your office design and style
- Choose between 1500mm x 1500mm, 1800mm x 1500mm or 1800mm x 1800mm individual corner desk top widths x 700mm depth
- Choose between natural white top with a single cable entry hole or beech top with a single cable entry hole
- Comes with 500mm high x 30mm thick black fabric screen

Top Finishes



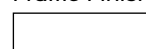
Natural White
Cable Entry Holes



Beech
Cable Entry Holes



Frame Finish



White
Powdercoat

Screen Finish



Black Fabric /
White Frame

Profile Leg

*Overall Measurements

Product Code	Users	Width	Depth	Height
IPLCWS4P15157	4	3000x 3000mm	1430mm	1200mm
IPLCWS4P18157	4	3600x 3000mm	1430mm	1200mm
IPLCWS4P18187	4	3600x 3600mm	1430mm	1200mm

Loop Leg

ILLCWS4P15157	4	3000x 3000mm	1430mm	1200mm
ILLCWS4P18157	4	3600x 3000mm	1430mm	1200mm
ILLCWS4P18187	4	3600x 3600mm	1430mm	1200mm

Why Choose Rapid Infinity?

- Simple, clean white legs and frames
- 700mm deep work top for tighter offices
- Natural white or beech top finish options
- Cable entry access holes for work tops
- Standard black fabric screen

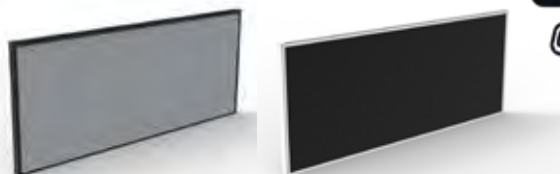
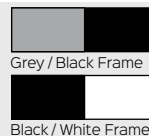
RAPID INFINITY ACCESSORIES

INFINITY CENTRE SCREEN

Centre screen with pinnable fabric and black or white frame colour finishes to match Deluxe and Infinity ranges.

IS1200, IS1500 and IS1800

Width	1200, 1500 or 1800mm
Height	500mm
Thickness	30mm
Warranty	5 Years

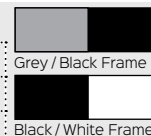


INFINITY RETURN DIVIDER

Return dividing screens with screw fixings in matching screen and frame colour finishes for Deluxe and Infinity ranges.

IS700

Width	690mm
Height	350mm
Thickness	20mm
Warranty	5 Years

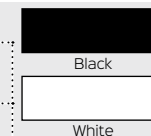


INFINITY INFILL PANEL

Infill panels for back to back workstations without screens, fills 30mm gap between back to back desk tops.

D-IF12, D-IF15 and D-IF18

Width	1200, 1500 or 1800mm
Depth	30mm
Height	30mm
Finish	Black or White
Warranty	5 Years

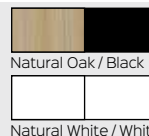


INFINITY DESK MOUNTED SHELF

25mm thick E1 rated enviroboard shelf with 4 x wire dividers. Matching finishes for Infinity and Deluxe ranges.

DMSHELF

Width	600mm
Depth	300mm
Overall Height	450mm
Desk Top to Shelf Height	208mm
Warranty	5 Years

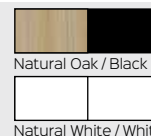


INFINITY SCREEN HUNG SHELF

18mm thick E1 rated enviroboard shelf with powdercoated steel shelf brackets, available in 2 matching Infinity finishes.

ISHSELF600

Width	600mm
Depth	270mm
Height	250mm
Warranty	5 Years



ETERNITY SLIMLINE MOBILE PEDESTAL

Slimline powdercoated steel mobile pedestal with 2 personal drawers and 1 file drawer, fifth wheel for stability and anti-tilt.

EMP3 WB

Width	300mm
Depth	535mm
Height	580mm
Warranty	10 Years



SINGLE TIER CABLE BASKET KIT

Under desk cable basket kit to organise cables, for power only. Includes basket, power module, gpo clip and lead.

SWBK

Available Widths	650mm, 950mm, 1250mm or 1550mm
Available Options	2 x GPO 4 x GPO
Finish	White or Black
Warranty	2 Years



DUAL TIER CABLE BASKET KIT

Under desk cable basket kit to organise cables, power and data. Includes baskets, power module, gpo clip, data tile and lead.

SWBK

Available Widths	650mm, 950mm, 1250mm or 1550mm
Available Options	2 x GPO + 1-10 Data Provision 4 x GPO + 1-10 Data Provision
Finish	White or Black
Warranty	2 Years



POWER RAIL

Above desk power and data rail with USB option, clamps onto desk top.

SWPR

Available Options	2 x Rotated GPO 1 x GPO + 2 x USB 2 x GPO + 2 x USB 2 x Rotated GPO + 2 Data Provision 4 x GPO + 3 x Data Provision 1 x GPO, 1 x Wireless Charging + 1 x USB
Finish	White or Black

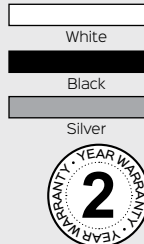


BOARDROOM TABLE BOX

Sits in table top, lid closes to obscure power and data points when not in use.

SWTB

Available Options	2 x GPO + 3 Data Provision 4 x GPO + 4 x Data Provision 4 x GPO + 5 x Data Provision 6 x GPO + 6 x Data Provision 8 x GPO + 8 x Data Provision
Finish	White, Black or Silver
Warranty	2 Years

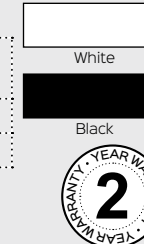


POP UP POWER

Pop up power module for hot desks or occasional workstations. Offers above desk power, data and USB, pop up when in use.

SWPOP

Available Options	2 x Rotated GPO 1 x GPO + 2 x USB
Finish	White or Black
Warranty	2 Years

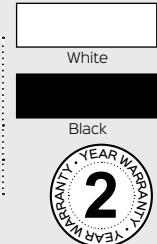


IN DESK MODULE

In desk module for hot desks or occasional workstations. Above desk power, data and USB, fits into 80mm cable entry hole.

SWHD


Available Options	1 x GPO 1 x GPO, 2 x USB + 1 x Keystone Jack
Finish	White or Black
Warranty	2 Years



CABLE MANAGEMENT SOLUTIONS

ECHO WIRELESS CHARGER

Wireless fast charging module that can fit into desk top. Check compatibility with phone brands.


ECHO		
Width	60mm Diameter	White
Power	15W	Black
Available Options	500mm TAG lead with L3F splitter or 1500mm lead with 3-pin plug	Black
Warranty	2 Years	



NEW

POWER POLE AND UMBILICAL

2.1m or 2.8m power pole or umbilical kits to bring power to your workstation.


POWER POLE AND UMBILICAL		
Desk to Ceiling Kit - 2.1m	2.1m power pole or umbilical kit for desk to ceiling power with ceiling kit, under desk mounting bracket, desk grommet and cover	Silver
		White
		Black
Floor to Ceiling Kit - 2.8m	2.8m power pole or umbilical kit for floor to ceiling power with ceiling kit, floor bracket and cover	
Warranty	2 Years	



NEW

ATOM USB CHARGING MODULE

USB charging module which can be integrated into desk top or fixed underneath desk top, or lounges with mounting bracket.

ATOM		
Available Options	2 x USB *Under-desk mounting bracket sold seperately*	White
		Black
Finish	White or Black	
Warranty	2 Years	



NEW



BLINKY POWER POD

Multi-power pod with different power configurations available. 135mm diameter cutout required to insert into work top.

BLINKY		White	Black
Width	135mm Diameter		
Available Options	3 x GPO + 500mm TAG lead 3 x GPO + 1500mm lead with 10A 3-pin plug 3 x GPO + 3 x Type-C/A Fast Charge + 500mm TAG lead 3 x GPO + 3 x Type-C/A Fast Charge + 1500mm lead with 10A 3-pin plug		
Warranty	2 Years		



NEW

ODYSSEY POWER DOCK

The complete power solution for where shared power is needed. Use in boardrooms, conference areas, hot desking or meetings.

ODYSSEY		White	Black
Power	4 x GPO + 2 x Type C/A USB Fast Charge + 1500mm lead with 10A 3-pin plug		
Finish	White or Black		
Warranty	2 Years		
Available Options	*Other Configurations Available		



NEW

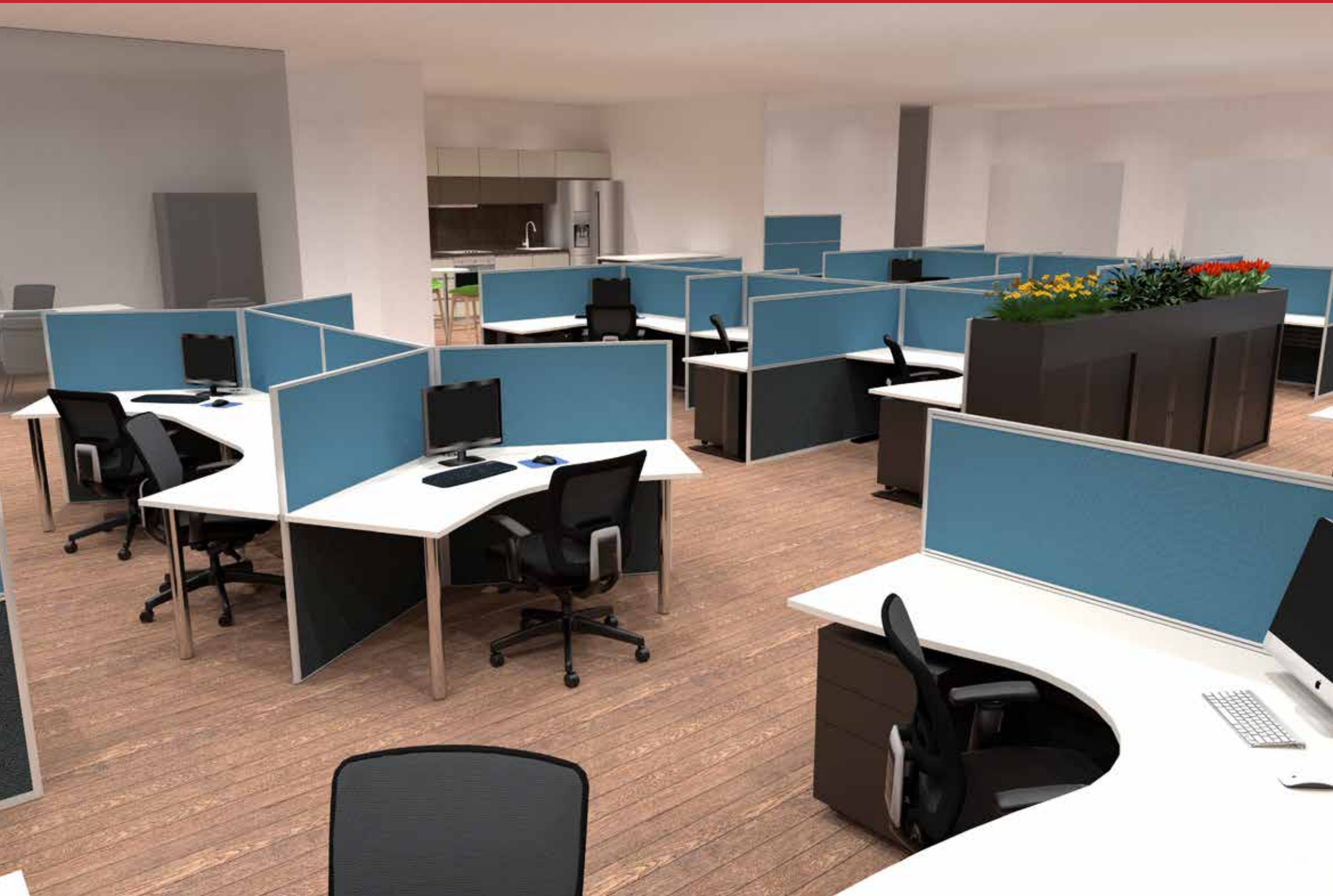
TRAX

1200mm cable tray to workstation solution for height adjustable desks, includes tray base fixing, and under desk bracket.

TRAX		White	Black
Available Options	Single Compartment or Dual Compartment		
Length	1200mm		
Finish	White or Black		
Warranty	2 Years		



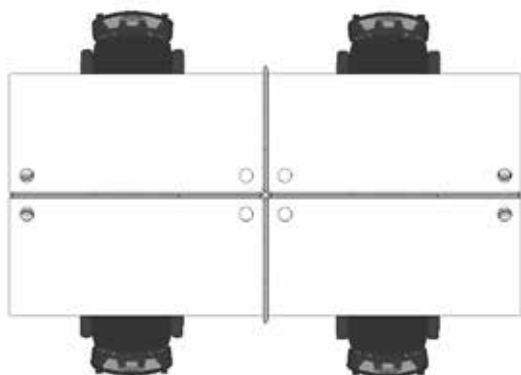
NEW



RAPID SCREEN CONFIGURATIONS

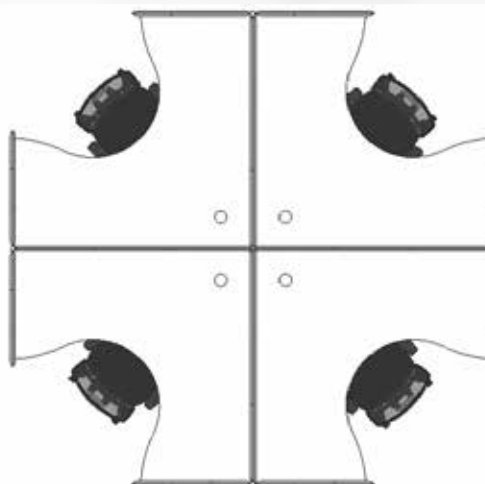
Slimline workstation system offering flexibility in configuration, with 2 different screen heights and multiple leg options.

RAPID SCREEN STRAIGHT POD



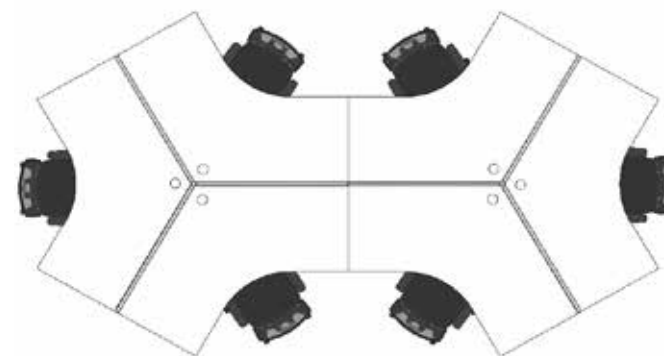
COMPONENTS · **Tops** · T127, T157 or T187
 1200W x 700D · 1500W x 700D · 1800W x 700D
Screens · SC1212, SC1512, SC1812 BU or GR
 1200W · 1500W · 1800W · 1250H or 1650H
Joining Pole · SC12/90 · 90° Degree Pole
Legs · SPLEG BS, BL or WS · Spleg Legs

RAPID SCREEN CORNER POD



COMPONENTS · **Tops** · T1515, T1812, T1815 or T1818
 1500 x 1500 · 1800 x 1200 · 1800 x 1500 · 1800 x 1800
Screens · SC1212, SC1512, SC1812 BU or GR
 1200W · 1500W · 1800W · 1250H or 1650H
Joining Pole · SC12/90 · 90° Degree Pole
Legs · DC60 CH, BL or WS · DC-60 Legs

RAPID SCREEN 120° DEGREE POD



COMPONENTS · **Tops** · T1212-12-7 · 120° Degree Top
 1200W x 1200W x 700D
Screens · SC1212, SC1216 BU or GR
 1200W · 1250H or 1650H
Joining Pole · SC12/120 · 120° Degree Pole
Legs · DC60 CH, BL or WS · DC-60 Legs

CHOOSE YOUR TABLE TOP

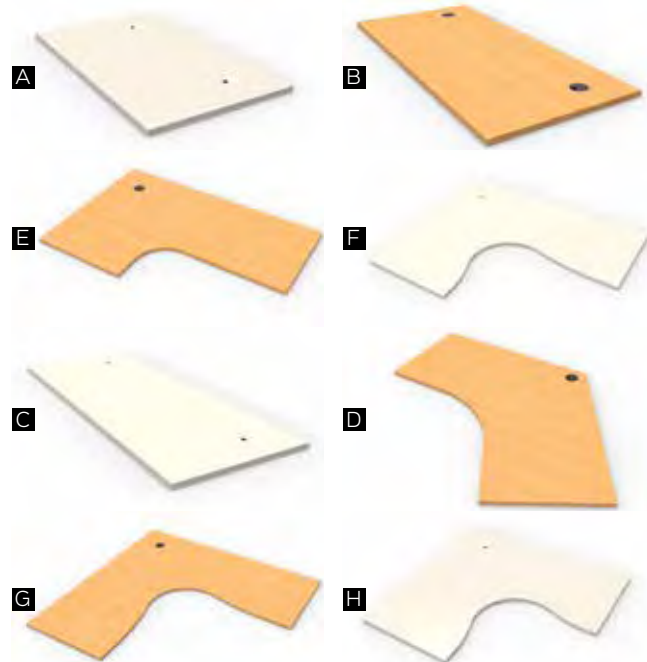
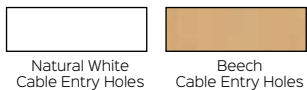


Image	Code	Width	Depth	Thickness
A	T127	1200mm	700mm	25mm
B	T157	1500mm	700mm	25mm
C	T187	1800mm	700mm	25mm
D	T1212-12	1200 x 1200mm	700mm	25mm
E	T1812	1800 x 1200mm	700mm	25mm
F	T1815	1800 x 1500mm	700mm	25mm
G	T1818	1800 x 1800mm	700mm	25mm
H	T1515	1500 x 1500 mm	700mm	25mm

Top Finishes



CHOOSE YOUR LEG STYLE



Image	Code	Product	Size	Qty
I	SPLEG	Span Leg	560mm W x 705mm H	2
J	AD-LEG	Adjustable Leg	70mm Dia. x 650-800mm H	2
K	DC60	Round Leg	60mm Dia. x 705mm H	4
L	CLEG	C Leg	550mm D x 705mm H	2

JOINING POLES



1250mm or 1650mm H

Link screens at 90°, 180° or 120° degrees dependant on workstation configuration.
Use in corners or to join 750mm W return screens.

CHOOSE YOUR SCREEN



M 1250mm H Screen in Blue or Grey with Charcoal Melamine Base



N 1650mm H Screen in Blue or Grey with Charcoal Melamine Base

Image	Code	Width	Depth	Height
M	SC1212	1200mm	30mm	1250mm
M	SC1512	1500mm	30mm	1250mm
M	SC1812	1800mm	30mm	1250mm
	SC712	750mm	30mm	1250mm
N	SC1216	1200mm	30mm	1650mm
N	SC1516	1500mm	30mm	1650mm
N	SC1816	1800mm	30mm	1650mm
	SC716	750mm	30mm	1650mm

Screen Finishes



The Rapid Screen system allows ultimate flexibility to suit your space. Different top shapes and sizes, screen heights, leg options and storage choices allow for personalised workstation design.

Screens available in an extended range of colours.
See page 64.

RAPID SCREEN COMPONENTS

CHOOSE YOUR SCREEN ACCESSORIES

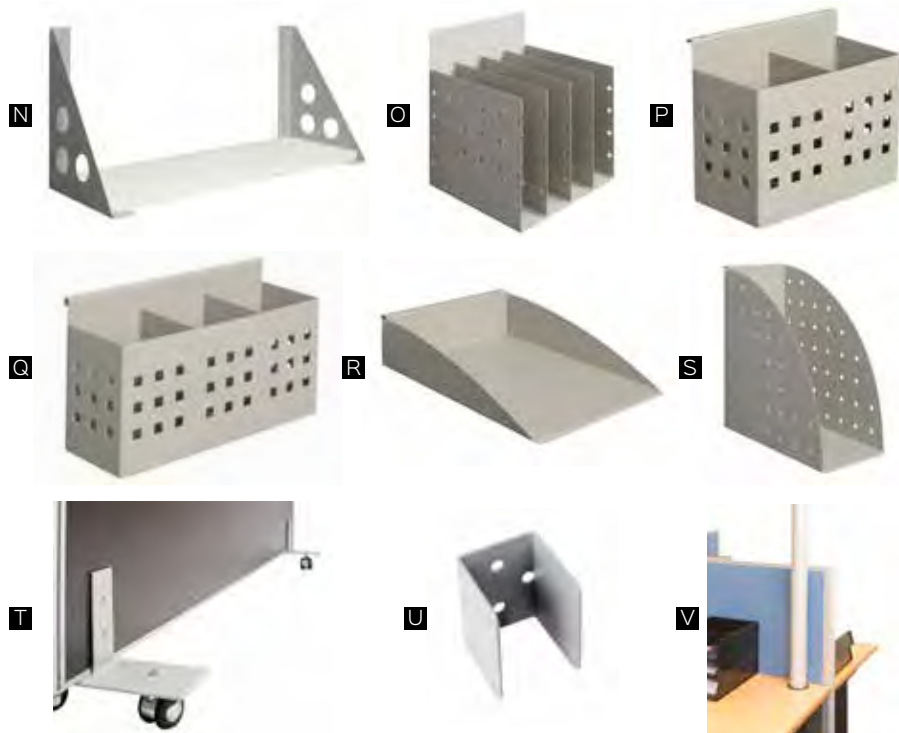


Image	Code	Description	Colour
N	SCSHELF SCSHELF BRACKET	900mm W Shelf (Brackets Sold Separately) Silver Shelf Brackets (Shelf Sold Separately)	Beech or Natural White Shelf
O	SCDOC DIVIDE	4 Space Document Divider	Silver
P	SCPENHOLDER 2	Double Pen Holder	Silver
Q	SCPENHOLDER 3	Triple Pen Holder	Silver
R	SCDOCTRAY	A4 Document Tray	Silver
S	SCFILE HOLDER	File Holder	Silver
T	SCFREE STANDING FEET	Free Standing Detachable Castor Feet	Silver
U	SCWALLBRACKET	Wall to Screen Starter Bracket	Silver
V	SW2.1 POWER POLE or SW2.8 POWER POLE	Power Pole (Available in 2.1m or 2.8m H)	Silver





STRAIGHT DESKS



RSD187M WNW · Natural White Top and White Frame



RSD187M SNW · Natural White Top and Silver Frame



RSD187M BB · Beech Top and Black Frame

CORNER WORKSTATIONS



RSCWS1818M BNW · Natural White Top and Black Frame



RSCWS1818M WB · Beech Top and White Frame



RSDR1818M SNW · Natural White Top and Silver Frame

Rapid Span Workstation Options

Workstations your way, mix and match colours and sizes.

The Rapid Span range of desking can be configured in back to back desk layouts and pods of workstations.

Contact us today for more information.



Top Finishes

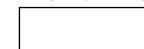


Natural White
Cable Entry Holes



Beech
Cable Entry Holes

Frame Finishes



White



Silver



Black

- Choose between 1200mm, 1500mm or 1800mm straight desk top widths or 1800 x 1200mm, 1500 x 1500mm, 1800 x 1500mm or 1800 x 1800mm corner workstation top widths x 700mm depth
- Choose between natural white or beech melamine tops with cable entry holes for cable management
- Choose between white, silver or black powdercoated steel modesty panel and legs

Product Code	Width	Depth	Height
RSD127	1200mm	700mm	730mm
RSD157	1500mm	700mm	730mm
RSD187	1800mm	700mm	730mm
RSCWS1812	1800 x 1200mm	700mm	730mm
RSCWS1515	1500 x 1500mm	700mm	730mm
RSCWS1815	1800 x 1500mm	700mm	730mm
RSCWS1818	1800 x 1800mm	700mm	730mm
RSDR1818	1800mm 1100 x 600mm D Return	700mm	730mm

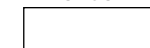
UNDER DESK STORAGE

Melamine mobile pedestal with 2 x personal drawers and 1 x file drawer. Lockable with metal runners and fifth wheel for stability.

SPMP3

Width	447mm
Depth	465mm
Height	690mm
Weight Rating	30kg per Drawer
Finish	Natural White or Beech
Warranty	5 Years

Finishes



Natural White



Beech

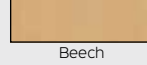
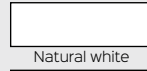


CUPBOARD

Full door cupboard with 1 x fixed mid shelf and 3 x adjustable shelves. Fully lockable with 2 keys included.

SP2FD18

Width	900mm
Depth	450mm
Height	1800mm
Finish	Natural White or Beech
Warranty	5 Years

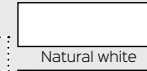


BOOKCASE

Open bookcase available in 2 heights. 1200mm H with 3 x adjustable shelves, 1800mm H with 4 x adjustable shelves.

SPBC12 and SPBC18

Width	900mm
Depth	315mm
Height	1200mm or 1800mm
Finish	Natural White or Beech
Warranty	5 Years

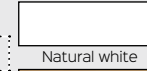


CREDENZA

Sliding door lockable credenza with 2 x adjustable shelves. Fully lockable with 2 keys included.

SPC12 and SPC18

Width	1200mm or 1800mm
Depth	450mm
Height	730mm
Finish	Natural White or Beech
Warranty	5 Years



HUTCH

Overhead hutch which includes adjustable shelves. 1200mm W with 2 vertical sections, 1800mm W with 3 vertical sections.

SPH12 and SPH18

Width	1200mm or 1800mm
Depth	315mm
Height	1070mm
Finish	Natural White or Beech
Warranty	5 Years



TABLES



Change the way you communicate. From round tables for small, informal groups, to flip top and folding tables. Boardroom tables, meeting, breakout areas, kitchen, training and education - the Rapidline table range has it all covered.



RAPID AIR ROUND TABLE

Round meeting table with modern tripod polished aluminium base available with choice of top finishes in 900mm diameter.

RAR900		Top Finishes
Top Diameter	900mm	
Table Height	750mm	
Top Finish	Natural White, Beech, Cherry or Natural Oak	
Base Finish	Polished Aluminium	
Warranty	5 Years	



TYPHOON ROUND TABLE

Round meeting table with 4 star black and polished aluminium base with adjustable feet.

TTR900 and TTR1200		Top Finishes
Top Diameter	900mm or 1200mm	
Table Height	730mm	
Top Finish	Natural White, Beech, Cherry or Natural Oak	
Base Finish	Polished Aluminium and Black	
Warranty	5 Years	



DISC BASE TABLE

Round meeting table available in 2 different top sizes and colours with flat disc base with choice of frame finishes.

CBT9 and CBT12		Top Finishes
Top Diameter	900mm or 1200mm	
Table Height	755mm	
Top Finish	Natural White, Beech, Cherry or Natural Oak	
Base Finish	Stainless Steel, White or Black	
Warranty	5 Years	



FOUR STAR BASE ROUND TABLE

Round meeting table with 4 star base available in chrome, white or black finish. Range of top colours in 2 different sizes.

RSRT 9/12, RWRT 9/12 and RBRT9/12		Top Finishes
Top Diameter	900mm or 1200mm	
Table Height	730mm	
Top Finish	Natural White, Beech, Cherry or Natural Oak	
Base Finish	Chrome, White or Black	
Warranty	5 Years	



IRONSTONE BASE ROUND TABLE

Round meeting table with solid melamine ironstone base, 25mm thick top available in 2 sizes and finishes.

CRM9 and CRM12		Top Finishes
Top Diameter	900mm or 1200mm	
Table Height	730mm	
Top Finish	Beech or Cherry	
Base Finish	Ironstone	
Warranty	5 Years	

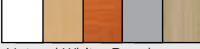




TABLES

TYPHOON FLIP TOP TABLE

Flip top table with polished aluminium and black frame, locking castors on wheels and table links available as optional extra.



TFT1575 and TFT1875

		Top Finishes
Top Size	1500 x 750mm or 1800 x 750mm	
Table Height	750mm	
Top Finish	Natural White, Beech, Cherry, Grey or Natural Oak	
Base Finish	Polished Aluminium and Black	
Warranty	5 Years	

FOLDING TABLE

Steel frame folding table suitable for heavy duty use, easy to use folding mechanism and adjustable levelling feet.




FFT1575, FFT1875 and FFT189

		Top Finishes
Top Size	1500 x 750mm or 1800 x 750mm or 1800 x 900mm	
Table Height	730mm	
Top Finish	Natural White, Beech, Cherry, Appletree or Natural Oak	
Base Finish	Black	
Warranty	3 Years	

FLIP TOP TABLE

Flip top table with silver powdercoated frame, padded pull handle and locking castors. Table links as optional extra.

FTT1575 and FTT1875

		Top Finishes
Top Size	1500 x 750mm or 1800 x 750mm	
Table Height	750mm	
Top Finish	Natural White, Beech, Cherry, Grey or Natural Oak	
Base Finish	Precious Silver	
Warranty	3 Years	



RAPID EDGE FOLDING TABLE

Folding table with black rubber strip edging, quick release mechanism, includes 2 x table links.




FBT2410

		Top Finishes
Top Size	2400 x 1000mm	
Table Height	743mm	
Top Finish	Natural White or Driftwood	
Frame Finish	Black and Polished Aluminium	
Warranty	5 Years	

STEEL FRAME TABLE

Black steel frame with adjustable levelling feet, available in 4 sizes with melamine rectangular top in range of finishes.




SFT126, SFT1575, SFT1875, SFT189

		Top Finishes
Top Size	1200 x 600mm, 1500 x 750mm, 1800 x 750mm or 1800 x 900mm	
Table Height	730mm	
Top Finish	Natural White, Beech, Cherry, Grey or Natural Oak	
Base Finish	Black	
Warranty	3 Years	

SILVER FRAME TABLE

Rectangular shaped table top with silver angled frame and adjustable feet. Available in two sizes and different top finishes.

RST1875 and RST189

		Top Finishes
Top Size	1800 x 750mm or 1800 x 900mm	
Table Height	730mm	
Top Finish	Natural White, Beech, Cherry, Grey or Natural Oak	
Base Finish	Precious Silver	
Warranty	3 Years	



RAPID AIR BOARDROOM TABLE

Boardroom table with suspended floating top and polished aluminium single or dual stage frame and 1 or 2-piece top.

RAB2412 and RAB3212



Top Size	2400 x 1200mm 1-Piece Top or 3200 x 1200mm 2-Piece Top	Top Finishes
Top Finish	Natural White, Beech, Cherry or Natural Oak	
Frame Finish	Polished Aluminium	Base Finishes
Warranty	5 Years	



TYPHOON BOARDROOM TABLE

Boardroom table with polished aluminium and black single stage or dual stage frame with 1 or 2-piece top in range of finishes.

TTR189, TTR2412 and TTR3212


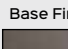
Top Size	1800 x 900mm, 2400 x 1200mm or 3200 x 1200mm	Top Finishes
Top Finish	Natural White, Beech, Cherry, or Natural Oak	
Frame Finish	Polished Aluminium and Black	Base Finishes
Warranty	5 Years	



IRONSTONE BASE BOARDROOM TABLE

Rectangular shaped mealtime top with ironstone melamine base. Available in T2412 1-piece top or T3212 2-piece top.

CBT2412 and CBT3212

Top Size	2400 x 1200mm 1-Piece Top or T3212 2-Piece Top.	Top Finishes
Top Finish	Natural White, Beech, Cherry or Natural Oak	
Warranty	5 Years	Base Finishes
		



DRAFTING HEIGHT STEEL FRAME TABLE

Rectangular drafting height table with black powdercoated steel frame and 900mm top height.

9SFT1575 and 9SFT189

Top Size	1500 x 750mm or 1800 x 900mm	Top Finishes
Table Height	900mm	
Top Finish	Natural White, Beech, Cherry, Grey or Natural Oak	Base Finishes
Warranty	3 Years	



HIGH BAR TABLE

Rectangular high bar table with black powdercoated frame including cross bar foot rest and adjustable levelling feet.

HBT189



Top Size	1800 x 900mm	Top Finishes
Table Height	1050mm	
Top Finish	Natural White, Beech, Cherry, Grey or Natural Oak	Base Finishes
Frame Finish	Black	
Warranty	3 Years	



DRY BAR TABLE

Dry bar height table perfect for any kitchen, breakout or hospitality setting with choice of round top finishes.

CDBT

Top Size	600mm Diameter	Top Finishes
Table Height	1085mm	
Base Finish	Stainless Steel, White or Black	Base Finishes
Warranty	5 Years	



RAPID PARAMOUNT



SINGLE SIDED · WITH OR WITHOUT SCREEN



NPM1P1875 NOWS · Natural Oak Top and White Frame



NPM1PWS1875 NW/BL · Natural White Top and Black Frame



NPM1PWS1875 NOWS · Natural Oak Top and White Frame

DOUBLE SIDED · WITH OR WITHOUT SCREEN

NEW



NPM2P1875 NO/BL · Natural Oak Top and Black Frame



NPM2PWS1875 NW/WS · Natural White Top and White Frame



NPM2PWS1875 NO/BL · Natural Oak Top and Black Frame

Rapid Paramount Electric Height Adjustable Workstation Options

- Choose between a single sided or double sided height adjustable workstation
- Choose between 1500mm or 1800mm individual desk top widths x 750mm depth
- Choose between natural oak scalloped top or natural white scalloped top finishes
- Choose between no screen or matching screen to your chosen frame colour - grey fabric screen with black frame or black fabric screen with white frame

Top Finishes



Natural Oak Scalloped



Natural White Scalloped

Screen and Frame Finishes



Grey Screen with Black Frame



Black Screen with White Frame

The Rapid Paramount range includes 25mm thick scalloped table tops, a powdercoated 3-stage frame and single heavy duty motor per user. Built in cable tray with provisions for GPO and Data per user on each workstation.

Product Code	Users	Screen	Width	Depth	Height Range
NPM1P1575	1	None	1500mm	750mm	655 - 1259mm
NPM1P1875	1	None	1800mm	750mm	655 - 1259mm
NPM1PWS1575	1	Yes	1500mm	780mm	655 - 1259mm
NPM1PWS1875	1	Yes	1800mm	780mm	655 - 1259mm
NPM2P1575	2	None	1500mm	1530mm	655 - 1259mm
NPM2P1875	2	None	1800mm	1530mm	655 - 1259mm
NPM2PWS1575	2	Yes	1500mm	1530mm	655 - 1259mm
NPM2PWS1875	2	Yes	1800mm	1530mm	655 - 1259mm

Optional Set Controller

Product Code: SS-PSC

Programmable handset can be added to electric height adjustable desk at anytime. Offers the ability to program 3 different height settings for up to 3 individual users each. Use the up and down buttons for quick adjustment to desk height without affecting the programmed heights.



The benefits of height adjustable desks are now well known. Setting the correct sitting height and alternating between sitting and standing assists with employee wellness and productivity.



Rapidline offers a whole range of height adjustable solutions - Rapid Paramount electric height adjustable workstations are available in single or double sided configurations, with or without matching privacy screens.



STRAIGHT DESK · ELECTRIC HEIGHT ADJUSTABLE



SE-187 SNW · Natural White Top and Silver Frame

CORNER WORKSTATION · ELECTRIC HEIGHT ADJUSTABLE

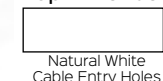


SE-18187 BNW · Natural White Top and White Frame

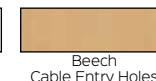
Rapid Span Electric Height Adjustable Workstation Options

- Choose between an electric height adjustable straight desk or corner workstation
- Choose between 1200mm, 1500mm or 1800mm straight individual desk top widths or 1800 x 1200mm, 1500 x 1500mm, 1800 x 1500mm and 1800 x 1800mm corner workstation desk tops x 700mm depth
- Choose between natural white or beech melamine tops with cable entry holes
- Choose between white, silver or black electric height adjustable steel frame with matching perforated modesty panel

Top Finishes

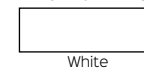


Natural White
Cable Entry Holes

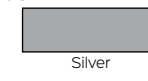


Beech
Cable Entry Holes

Frame Finishes



White



Silver



Black

The Rapid Span Electric Height Adjustable range offers desk height adjustment between 685 to 1205mm.

Matching perforated steel modesty panel to chosen frame colour and stiffening rail for 1500mm W and 1800mm W tops.

31mm per second electric height adjustment speed and 100kg maximum top load rating.



SE-187 BB · Beech Top and Black Frame



SE-18187 WB · Beech Top and White Frame



SE-187 WNW · Natural White Top and White Frame



SE-18187 SB · Beech Top and Silver Frame

Product Code	Width	Depth	Height Range
SE-127	1200mm	700mm	685 - 1205mm
SE-157	1500mm	700mm	685 - 1205mm
SE-187	1800mm	700mm	685 - 1205mm
SE-18127	1800 x 1200mm	700mm	685 - 1205mm
SE-15157	1500 x 1500mm	700mm	685 - 1205mm
SE-18157	1800 x 1500mm	700mm	685 - 1205mm
SE-18187	1800 x 1800mm	700mm	685 - 1205mm

Optional Set Controller

Product Code: SS-PSC

Programmable handset can be added to electric height adjustable desk at anytime. Offers the ability to program 3 different height settings for up to 3 individual users each. Use the up and down buttons for quick adjustment to desk height without affecting the programmed heights.



RAPID BOOST

Boost electric height adjustable workstation frame with 620 to 1250mm height adjustment, compatible with range of tops.

BOOST		Top Finishes
Top Sizes	1200-1800mm W x 600-900mm D	<input type="checkbox"/> Natural White <input type="checkbox"/> Scalloped <input type="checkbox"/> Natural Oak <input type="checkbox"/> Scalloped <input type="checkbox"/> Natural White <input type="checkbox"/> Cable Entry <input type="checkbox"/> Beech Cable <input type="checkbox"/> Entry
Height	620-1250mm	Frame Finishes
Features	Dual motor with memory controller for 3 presets	<input type="checkbox"/> White <input type="checkbox"/> Black
Weight Capacity	125kg	
Warranty	10 Years	



RAPID SURGE

Stand alone gas lift operated height adjustable desk, control levers each side and 12 different height settings.

RS1 W		
Top Width	1190mm	White
Top Depth	590mm	
Height	750-1100mm	
Weight Capacity	22kg Weight Capacity on Top	
Warranty	10 Years	



TRIUMPH MANUAL HEIGHT ADJUSTABLE

Manual height adjustable desk with universal left or right hand side crank handle and integrated cable dump tray.

TMA127, TMA157 and TMA187		Top Finishes
Top Width	1200mm, 1500mm or 1800mm	<input type="checkbox"/> Natural White <input type="checkbox"/> Beech
Top Depth	700mm	Frame Finishes
Height	715-1015mm	<input type="checkbox"/> White
Weight Capacity	100kg Weight Capacity on Top	
Frame Finish	White Powdercoat	
Warranty	5 Years	



RAPID FLUX

Electric height adjustable solution for an existing or new fixed desk, available in 2 sizes and finishes. 22mm per second speed.

RF1 and RF2		
Top Width	RF1 - 880mm or RF2 - 950mm	Black or White
Top Depth	415mm	
Height	120-500mm	
Weight Capacity	25kg Weight Capacity on Top	
Warranty	10 Years	



RAPID RISER

Manual height adjustable solution for an existing or new fixed desk, available in 2 sizes and finishes.

RR1 and RR2		
Top Width	RR1 - 680mm or RR2 - 890mm	Black or White
Top Depth	590mm	
Height	150-500mm	
Weight Capacity	15kg Weight Capacity on RR1 18kg Weight Capacity on RR2	
Height Adjustment	15 Different Height Levels	



RAPID REFRESH MAT

Anti-fatigue mat for use with all height adjustable solutions when standing. Moulded areas provide massage points for feet.

RRM BL		
Width	800mm	Black
Depth	518mm	
Thickness	48mm	
Weight	2.4kg	
Warranty	10 Years	



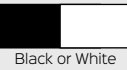
MONITOR ARMS

EXECUTIVE SINGLE MONITOR ARM

Executive gas spring single monitor arm with effortless rotating, pivoting and extendable adjustments.

ESMARM

Tilt Range	-85° to 15°
Screen Size	17" to 27"
Vesa Size	75 x 75mm or 100 x 100mm
Weight Limit	Min. 2kg - Max 9kg
Fixing	Clamp and Grommet Fix Kit
Warranty	5 Years



Black or White

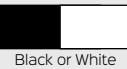


EXECUTIVE DUAL MONITOR ARM

Executive gas spring dual monitor arms with effortless rotating, pivoting and extendable adjustments.

EDMARM

Tilt Range	-85° to 15°
Screen Size	17" to 27"
Vesa Size	75 x 75mm or 100 x 100mm
Weight Limit	Min. 2kg - Max 9kg per Arm
Fixing	Clamp and Grommet Fix Kit
Warranty	5 Years



Black or White

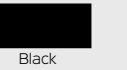


REVOLVE SINGLE MONITOR ARM

Pole mounted single monitor arm with 200-360mm height range and cable management within, in black finish.

RMA1 BL

Arm Reach	425mm
Pole Height	392mm
Height	200-360mm
Weight Limit	10kg
Movement Range	-85° to 15°
Warranty	3 Years



Black



REVOLVE DUAL MONITOR ARM

Pole mounted dual monitor arm with 200-400mm height range and cable management within, in black finish.

RMA2 BL

Arm Reach	360mm per Arm
Pole Height	450mm
Height	200-400mm
Weight Limit	10kg per Arm
Movement Range	-85° to 15°
Warranty	3 Years



Black

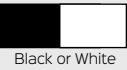


ELEVATE SINGLE MONITOR ARM

Single swivel monitor arm with 160-480mm height range, 180° degree portrait or landscape adjustment and clamp fix kit.

ELEVATE

Forward Range	500mm
Vertical Range	160-480mm
Size Limit	Suits up to 24 Inch Monitor
Weight Limit	Min. 2kg - Max 8kg
Movement Range	180°
Warranty	5 Years



Black or White



REVOLVE QUAD MONITOR ARM

Pole mounted quad monitor arm with 200-660mm height range and cable management within, in black finish.

RMA4 BL

Arm Reach	360mm per Arm
Pole Height	708mm
Height	200-660mm
Weight Limit	10kg per Arm
Movement Range	-85° to 15°
Warranty	3 Years



Black





LAPTOP DESK

Melamine open desk in compact size for laptop or hot desk. Matching under desk modesty panel, available in 2 finishes.

CDK96

Width	900mm
Depth	600mm
Height	730mm
Finish	Natural White or Grey
Warranty	5 Years

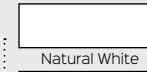


HOME OFFICE DESK

Melamine open desk available in white and grey finishes, with matching under desk modesty panel. Drawer sold separately.

CDK126 and HDKP1D Single Drawer

Desk Top Size	1200 x 600mm
Desk Top Height	730mm
Optional Extra	HDKP1D Single Drawer
Finish	Natural White or Grey
Warranty	5 Years

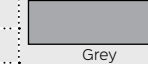
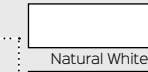


OPEN DESK

Melamine open desk available in 2 sizes and 2 different finishes. Includes matching under desk melamine modesty panel.

CDK1575 and CDK189

Top Size	1500 x 750mm or 1800 x 900mm
Height	730mm
Finish	Natural White or Grey
Warranty	5 Years

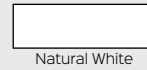


CORNER WORKSTATION

Melamine 3-piece corner workstation with under desk modesty panels, available in white and grey finishes.

CWS1818

Width	1800 x 1800mm
Depth	600mm
Height	730mm
Finish	Natural White or Grey
Warranty	5 Years

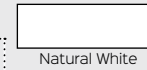


DESK RETURN

Melamine return to be fixed to any desk to create a corner shaped workstation with extra desk top space.

CR6

Width	900mm
Depth	600mm
Height	730mm
Finish	Natural White or Grey
Warranty	5 Years



DESK HOB

Straight edge hob for use on straight desk or corner workstation. Create a reception or add privacy to a desk.

CHOB18N

Width	1800mm
Depth	350mm
Height	400mm
Finish	Natural White or Grey
Warranty	5 Years



CUPBOARD

Full door cupboard with 1 x fixed mid shelf and 3 x adjustable shelves. Fully lockable with 2 keys included.

SP2FD18

Width	900mm
Depth	450mm
Height	1800mm
Finish	Natural white or Grey
Warranty	5 Years



BOOKCASE

Open bookcase available in 2 heights. 1200mm H with 3 x adjustable shelves, 1800mm H with 4 x adjustable shelves.

SPBC12 and SPBC18

Width	900mm
Depth	315mm
Height	1200mm or 1800mm
Finish	Natural white or Grey
Warranty	5 Years



CREDENZA

Sliding door lockable credenza with 2 x adjustable shelves. Fully lockable with 2 keys included.

SPC12 and SPC18

Width	1200mm or 1800mm
Depth	450mm
Height	730mm
Finish	Natural white or Grey
Warranty	5 Years



HUTCH

Overhead hutch which includes adjustable shelves. 1200mm W with 2 vertical sections, 1800mm W with 3 vertical sections.

SPH12 and SPH18

Width	1200mm or 1800mm
Depth	315mm
Height	1070mm
Finish	Natural white or Grey
Warranty	5 Years



PEDESTALS

CDKP3D Lockable under desk fixed pedestal with 3 drawers.

SPMP3 Lockable 2 drawer and 1 file mobile pedestal with metal runners and fifth wheel for stability, supplied with 2 keys.

Fixed Pedestal	CDKP3D
CDKP3D Size	465mm x 447mm x 454mm H
Mobile Pedestal	SPMP3
SPMP3 Size	447mm x 465mm x 690mm H
Warranty	5 Years



RAPID WORKER

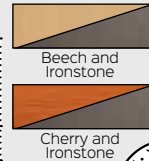


STRAIGHT DESK

Melamine open desk available in beech or cherry finishes, with ironstone under desk modesty panel and frame.

CDK96/126/1575/1875/189

Top Size	900 x 600mm, 1200 x 600mm, 1500 x 750mm, 1800 x 750mm or 1800 x 900mm
Height	730mm
Finish	Beech or Cherry with Ironstone
Warranty	5 Years

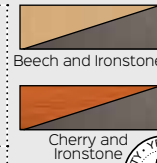


CORNER WORKSTATION

Melamine 3-piece corner workstation available in beech or cherry finishes, with ironstone under desk modesty panel.

RWCWS1212/1215/1218/1221/1515/1815/1818/2115/2118/2121

Desk	1200 x 1200mm, 1200 x 1500mm,
Top	1200 x 1800mm, 1200 x 2100mm,
Size	1500 x 1500mm, 1800 x 1500mm, 1800 x 1800mm, 2100 x 1500mm, 2100 x 1800mm or 2100 x 2100mm
Height	730mm
Depth	600mm (or 750mm in 1800 x 1800mm)

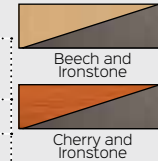


DESK HOB

Straight edge hob for use on straight desk or corner workstation. Create a reception or add privacy to a desk.

CHOB15N and CHOB18N

Top Size	1500 x 350mm or 1800 x 350mm
Height	400mm
Finish	Beech or Cherry with Ironstone
Warranty	5 Years



DESK RETURN

Melamine add on desk return piece to create more workspace.

CR45/6/12 and CRP3D

Desk Return	CR45, CR6 or CR12
Desk Return Size	900 x 450mm, 900 x 600mm or 1200 x 600mm
Warranty	5 Years



FIXED PEDESTAL

Lockable 2 or 3 drawer fixed pedestal which can be added to any desk.

CDKP1D1F, CDKP3D and HDKP1D

CDKP1D1F	2 Drawers - 1 Drawer and 1 File Drawer
CDKP3D	3 Drawers
Single Drawer	HDKP1D (Ironstone Only)
Warranty	5 Years

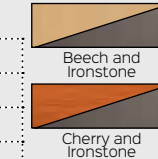


MOBILE PEDESTAL

Mobile pedestals available in a variety of configurations. 2 file drawers, 2 drawers and 1 file drawer or 4 drawers.

CMP2F, CMP2D1F and CMP4D

CMP2F	2 Drawers
CMP2D1F	2 Drawers and 1 File Drawer
CMP4D	4 Drawers
CMP2D1F-I	2 Drawers and 1 File Drawer - Ironstone
Warranty	5 Years

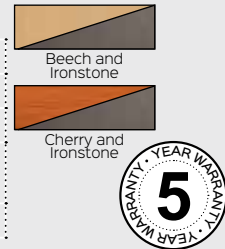


CUPBOARD

Full door cupboard with 1 x fixed mid shelf and 3 x adjustable shelves. Fully lockable with 2 keys included.

CSC2FD

Width	900mm
Depth	450mm
Height	1800mm
Finish	Beech or Cherry with Ironstone
Warranty	5 Years

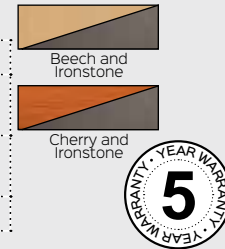


BOOKCASE

Open bookcase available in 900mm or 1200mm H with 3 x adjustable shelves, or 1800mm H with 4 x adjustable shelves.

CBC9, CBC12 and CBC18

Width and Depth	900mm x 315mm
Height	900mm, 1200mm or 1800mm
Finish	Beech or Cherry with Ironstone
Warranty	5 Years

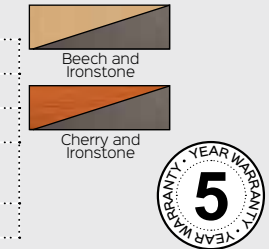


LOCKABLE WALL UNIT

Wall unit with 2 shelves and lockable half height storage cupboard. Available in beech or cherry with ironstone finishes.

CSC2HD

Width	900mm
Depth	450mm
Height	1800mm
Finish	Beech or Cherry with Ironstone
Warranty	5 Years

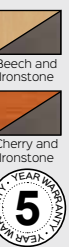


CREDENZA

Sliding door lockable credenza with 2 x adjustable shelves. Fully lockable with 2 keys.

CMZ1245, CMZ1545 and CMZ1845

Width	1200mm, 1500mm or 1800mm
Depth	450mm
Height	730mm
Finish	Beech with Ironstone or Cherry with Ironstone
Warranty	5 Years



HUTCH

Overhead hutch including adjustable shelves over multiple vertical sections.

CH12, CH15 and CH18

Width	1200mm, 1500mm or 1800mm
Depth	315mm
Height	1070mm
Shelves	4 in 1200mm and 1500mm, 6 in 1800mm W



PIGEON HOLE UNIT

Melamine pigeon hole unit with 20 slots, available in beech or cherry and ironstone.

PH20

Width	1040mm
Depth	380mm
Height	1040mm
Finish	Beech or Cherry with Ironstone
Warranty	5 Years



FILING CABINET

Melamine 3 or 4 drawer filing cabinet available in beech or cherry and ironstone.

C3FC and C4FC

Width	465mm
Depth	600mm
Height	998mm or 1300mm
Finish	Beech or Cherry with Ironstone
Warranty	5 Years



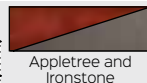


OPEN DESK

Melamine open desk in appletree top finish with ironstone under desk modesty panel and side. Drawers sold separately.

VDK1575 and VDK1875

Width	1500mm or 1800mm
Depth	750mm
Height	730mm
Finish	Appletree with Ironstone
Warranty	5 Years



*VDKP1D1F Desk
Drawers Optional Extra

METAL LEG DESK

Appletree top with 2 cable entry holes and metal span leg base with perforated modesty panel and legs in black.

VDKMB1575 and VDKMB1875

Width	1500mm or 1800mm
Depth	750mm
Height	730mm
Finish	Appletree with Black
Warranty	5 Years

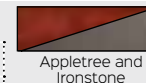


DESK HOB

Curved edge hob for use on straight desk or corner workstation. Create a reception or add privacy to a desk.

CHOB18N

Width	1800mm
Depth	350mm
Height	400mm
Finish	Appletree with Ironstone
Warranty	5 Years



CORNER WORKSTATION

Appletree one piece top with 600mm deep with cable entry hole and melamine 3-piece ironstone base.

VCW186

Width	1800 x 1800mm
Depth	600mm
Height	730mm
Finish	Appletree with Ironstone
Warranty	5 Years



METAL BASE CORNER WORKSTATION

Appletree 1-piece 700mm deep curved top with black metal base, perforated metal modesty panel and cable entry hole.

VCWMB186

Width	1800 x 1800mm
Depth	700mm
Height	730mm
Finish	Appletree with Ironstone
Warranty	5 Years



HUTCH

Storage hutch for use on top of melamine base desk or credenza. Includes 4 cupboard spaces and 6 shelf spaces.

VH18

Width	1800mm
Depth	380mm
Height	1070mm
Finish	Appletree with Ironstone
Warranty	5 Years



CUPBOARD

Full door cupboard with 1 x fixed mid shelf and 3 x adjustable shelves. Fully lockable with 2 keys included.

VSC2FD

Width	900mm
Depth	450mm
Height	1800mm
Finish	Appletree with Ironstone
Warranty	5 Years



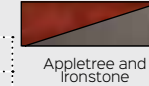
Traditional dark wood finish with ironstone or black frames for desking, 25mm thickness all over. Matching storage for a classic, executive style.

BOOKCASE

Open bookcase with 4 adjustable shelves, appletree finish with ironstone sides.

VBC18

Width and Depth	900mm
Depth	315mm
Height	1800mm
Finish	Appletree with Ironstone
Warranty	5 Years

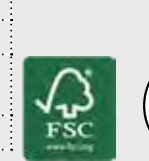
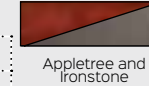


CREDENZA

Sliding door lockable credenza with 2 x adjustable shelves. Fully lockable with 2 keys included.

VCZ1245 and VCZ1845

Width	1200mm or 1800mm
Depth	450mm
Height	730mm
Finish	Appletree with Ironstone
Warranty	5 Years

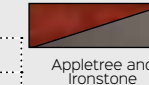


FILING CABINET

Lockable filing cabinet with 4 drawers of storage space. Appletree finish with ironstone sides and silver handles.

V4FC

Width	465mm
Depth	600mm
Height	1300mm
Warranty	5 Years



PEDESTALS

VDKP1D1F Lockable 2 or **VDKP3D** 3 drawer fixed pedestal which can be added to any desk.

VMP2D1F Mobile pedestal with 2 drawers and 1 file drawer.

VDKP1D1F	Fixed 2 Drawers - 1 Drawer and 1 File Drawer (Use With Ironstone Base)
VDKP3D	Fixed 3 Drawers (Use With Ironstone Base)
VMP2D1F	Mobile Pedestal with 2 Drawers and 1 File Drawer
Warranty	5 Years



CHAIRS



CHAIR ACCREDITATIONS

AFRDI and BIFMA provide standards, testing and product certification for office furniture so that buyers can be sure their chosen chair is of high quality and fit for intended use.

AFRDI	GREENGUARD	BIFMA
		
AFRDI provides standards, testing and product certification across different levels of standards for furniture in the Australian market.	Greenguard certification helps buyers identify interior products and materials that have low chemical emissions during production.	BIFMA is an international body developing furniture safety, durability and sustainability standards that ensure product performance.

ERGO

Fully ergonomic black mesh back chair with seat slide and ratchet back, suitable for heavy duty use. Weight rating of 165kgs.

ERGO TASK	
Seat Size	520 x 490mm
Gas Height Range	450-540mm
Optional Extras	Adjustable arms available as optional additional extra
Weight Rating	165kg



MOTION

Mesh back task chair with grey seat, donati-dopo weight sensitive mechanism, seat slide, lumbar cushion and 3D adjustable arms.

MMC BG	
Seat Size	510 x 520mm
Gas Height Range	440-530mm
Finishes	Black mesh back, grey fabric seat and white frame
Weight Rating	135kg



HARTLEY TASK

Synchro mechanism with tension control, moulded foam seat, black mesh back and adjustable arms.

HARTLEY TASK	
Seat Size	480 x 500mm
Gas Height Range	440-520mm
Finishes	Black mesh back, black fabric seat and black frame
Weight Rating	110kg



LUMINOUS

High back black mesh executive chair with synchro mechanism, adjustable arms and stylish white / grey frame.

LUMINOUS	
Seat Size	480 x 545mm
Gas Height Range	420-510mm
Finishes	Black mesh back, black fabric seat and white / grey frame
Weight Rating	135kg



GESTURE

Mesh back task chair with grey seat, synchro-dynamic mechanism, seat slide and synchronised back rest and seat pan tilt.

GTC BK	
Seat Size	480 x 470mm
Gas Height Range	450-540mm
Finishes	Black mesh back, grey fabric seat and black frame
Weight Rating	130kg



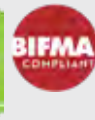
MESH CHAIRS

KAL

Black high mesh back with lumbar support, synchro mechanism with tension control and adjustable arms. Weight rating of 135kgs.

KAL

Seat Size	500 x 510mm
Gas Height Range	430-520mm
Finishes	Black mesh back, black fabric seat and black frame
Weight Rating	135kg

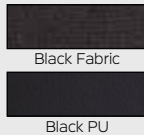


EM300

Fully ergonomic mesh back, black fabric or black pu seat, optional extra polished aluminium base or adjustable arms also available.

EM300

Seat Size	490 x 440mm
Gas Height Range	460-590mm
Finishes	Available in black fabric or pu seat with black mesh back
Weight Rating	110kg



AM100

Fully ergonomic with curved black mesh back, black fabric seat and included adjustable arms.

AM100

Seat Size	470 x 490mm
Gas Height Range	460-550mm
Finishes	Black mesh back, black fabric seat and black frame
Weight Rating	120kg

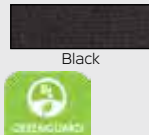


ZOOM

Mesh back, foldable training and conference chair with optional extra foldable tablet arm available.

ZOOM and ZOOM TABLET

Seat Size	490 x 460mm
Back Height	330mm
Optional Extra	265 x 420mm Foldable tablet arm as additional extra
Weight Rating	110kg



AM200

Medium black mesh back with fabric seat, infinite lock tilt, adjustable arms, and polished aluminium base.

AM200

Seat Size	520 x 500mm
Gas Height Range	420-520mm
Finishes	Black mesh back, and fabric seat with aluminium base
Weight Rating	120kg

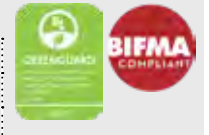


HARTLEY VISITOR

Black cantilever frame, adjustable arms and black mesh back visitor chair with comfortable padded fabric seat.

HARTLEY VISITOR

Seat Size	510 x 480mm
Back Height	485mm
Finishes	Black mesh back, and fabric seat with black frame
Weight Rating	135kg



WM600

Ideal meeting chair with polished aluminium base and arms, comfortable black mesh material.

WM600

Seat Size	510 x 420mm
Gas Height Range	480-590mm
Finishes	Black perforated mesh back and seat with polished aluminium frame
Weight Rating	120kg

Black



VIVA

Stylish white polypropylene shell and white base with black PU seat pad.

VIVA

Seat Size	455 x 430mm
Gas Height Range	425-515mm
Finishes	Black PU seat with white frame
Weight Rating	110kg
Warranty	5 Years

Black PU

NEW



VESTA

Black mesh back chair with black fabric seat and arms, suitable for home office use.

VESTA

Seat Size	460 x 460mm
Gas Height Range	430-530mm
Finishes	Black mesh back, and fabric seat and black frame
Weight Rating	90kg

Black



RE100

Black plastic perforated back, single point lock with arms, suitable for home office use.

RE100

Seat Size	510 x 500mm
Gas Height Range	470-590mm
Finishes	Black plastic back, and fabric seat and black frame
Weight Rating	110kg

Black



VIENNA

Mesh back chair with arms, suitable for home office or light commercial use.

VIENNA

Seat Size	490 x 490mm
Gas Height Range	430-550mm
Finishes	Black fabric seat with frame and choice of coloured mesh back
Weight Rating	100kg

Black

Red

Blue

Lime

Silver



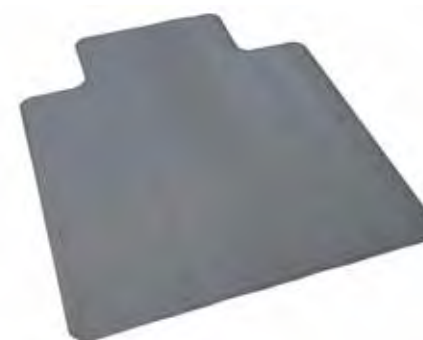
CHAIR MAT

Dimpled chair mat for use on carpets, smooth chair mat for use on hard floors.

CHAIR MAT

MAT S - Small Dimpled	915mm x 1200mm x 2mm
MAT L - Large Dimpled	1140mm x 1350mm x 2mm
MAT SM S - Small Smooth	915mm x 1200mm x 2mm
MAT SM L - Large Smooth	1140mm x 1350mm x 2mm

Clear



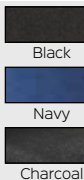
OPERATOR CHAIRS

EC070CM

AFRDI level 6, fully ergonomic medium back fabric chair, injection moulded foam seat and back tilt with gas lift.

EC070CM

Seat Size	450 x 500mm
Gas Height Range	470-600mm
Optional Extras	Adjustable arms, polished aluminium base and drafting kit
Weight Rating	120kg

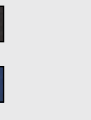
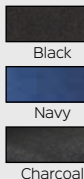


EC070BH

High back chair with gas lift, back tilt with injection moulded foam.

EC070BH

Seat Size	450 x 500mm
Gas Height Range	470-600mm
Optional Extras	Adjustable arms, polished aluminium base and drafting kit
Weight Rating	120kg

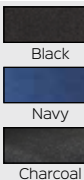


EC070BM

AFRDI level 6, medium back fabric chair with back tilt, gas lift and injection moulded foam seat.

EC070BM

Seat Size	450 x 500mm
Gas Height Range	470-600mm
Optional Extras	Adjustable arms, polished aluminium base and drafting kit
Weight Rating	120kg



EC070BM DRAFTING

Medium back drafting chair with back tilt, gas lift and injection moulded foam, adjustable arms available as optional extra.

EC070BM DRAFTING

Seat Size	450 x 500mm
Gas Height Range	630-800mm
Finishes	Black fabric back and seat with chrome foot ring
Optional Extras	Adjustable arms
Weight Rating	120kg

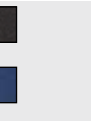
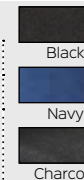


EC070CH

High back chair with gas lift, back and seat tilt with injection moulded foam.

EC070CH

Seat Size	450 x 500mm
Gas Height Range	470-600mm
Optional Extras	Adjustable arms, polished aluminium base and drafting kit
Weight Rating	120kg



CHAIR ACCESSORIES



Adjustable Arms
Product Code: ADJ ARMS
Adjustable height arms with soft arm pad.



Polished Aluminium Base
Product Code: CH BASE
Modernise and upstyle your chair to look more up market with a polished aluminium base.



Drafting Kit
Product Code: DRAFTING KIT
Create a drafting chair from a compatible operator chair with this handy kit.

EG100CH

AFRDI level 6, fully ergonomic chair with back and seat tilt, gas lift and high back, for user up to 130kg.

EG100CH			AFRDI
Seat Size	520 x 480mm	Black	✓
Gas Height Range	480-620mm	Navy	
Optional Extras	Adjustable arms, polished aluminium base and drafting kit	Charcoal	
Weight Rating	130kg		10 YEAR WARRANTY



SWIFT

High back black fabric operator chair, infinite tilt lock and polished aluminium spider base.

SWIFT BL			
Seat Size	540 x 450mm	Black	
Gas Height Range	510-590mm		
Finishes	Black fabric seat and back with polished aluminium base		
Weight Rating	130kg		10 YEAR WARRANTY



EG400

AFRDI level 6, fully ergonomic chair with back and seat tilt, square back, for user up to 130kg

EG400			AFRDI
Seat Size	520 x 480mm	Black	✓
Gas Height Range	480-620mm	Navy	
Optional Extras	Adjustable arms, polished aluminium base and drafting kit	Charcoal	
Weight Rating	130kg		10 YEAR WARRANTY



ET20

Black fabric medium back chair with gas lift, back and seat tilt with injection moulded foam.

ET20			
Seat Size	480 x 460mm	Black	
Gas Height Range	420-530mm		
Optional Extras	Adjustable arms, polished aluminium base and drafting kit		
Weight Rating	100kg		3 YEAR WARRANTY



PO500

AFRDI level 6, fully ergonomic high back chair, extra large seat and back tilt with gas lift and heavy duty mechanism.

PO500			AFRDI
Seat Size	530 x 510mm	Black	✓
Gas Height Range	490-590mm	Navy	
Optional Extras	Adjustable arms, polished aluminium base and drafting kit	Charcoal	
Weight Rating	150kg	Black PU	10 YEAR WARRANTY



CHAIR ACCESSORIES



Adjustable Arms

Product Code: ADJ ARMS
Adjustable height arms with soft arm pad.

Polished Aluminium Base

Product Code: CH BASE
Modernise and upstyle your chair to look more up market with a polished aluminium base.



Drafting Kit

Product Code: DRAFTING KIT
Create a drafting chair from a compatible operator chair with this handy kit.

EXECUTIVE CHAIRS

PU300

Fully ergonomic soft black pu chair, ratchet back, seat slide, chrome base and adjustable arms.

PU300

Seat Size	540 x 450mm	Black PU
Gas Height Range	510-590mm	
Finishes	Soft black PU seat and back with chrome spider base	
Weight Rating	130kg	



CL710

Soft black pu upholstery, 4 point tilt lock, high back executive chair with curved armrests.

CL710

Seat Size	530 x 530mm	Black PU
Gas Height Range	460-550mm	
Finishes	Soft black PU seat and back with black spider base	
Weight Rating	120kg	



CL410

Soft black pu upholstery with fabric inlay, infinite tilt lock, curved arm rests and chrome base.

CL410

Seat Size	540 x 500mm	Black PU
Gas Height Range	450-550mm	
Finishes	Soft black PU seat and back with chrome spider base	
Weight Rating	120kg	



CL820

Soft black pu upholstery, infinite tilt lock, curved polished aluminium arms and base.

CL820

Seat Size	520 x 480mm	Black PU
Gas Height Range	420-490mm	
Finishes	Soft black PU seat and back with polished aluminium base	
Weight Rating	130kg	



CL610

Soft black pu upholstery, single point tilt lock, medium back with curved armrests.

CL610

Seat Size	494 x 500mm	Black PU
Gas Height Range	450-580mm	
Finishes	Soft black PU seat and back with black spider base	
Weight Rating	120kg	

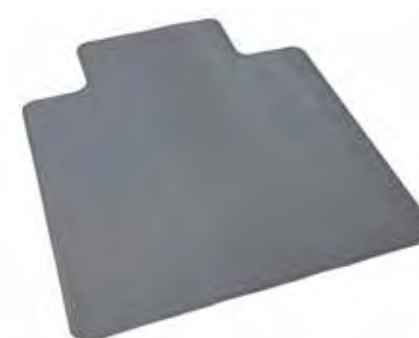


CHAIR MAT

Dimpled chair mat for use on carpets, smooth chair mat for use on hard floors.

CHAIR MAT

MAT S - Small Dimpled	915mm x 1200mm x 2mm	Clear
MAT L - Large Dimpled	1140mm x 1350mm x 2mm	
MAT SM S - Small Smooth	915mm x 1200mm x 2mm	
MAT SM L - Large Smooth	1140mm x 1350mm x 2mm	



PELLE HIGH BACK

High back executive chair in black pu leather, seat and back tilt with multi-lock and polished aluminium 5 star spider base.

PHB BL

Seat Size	500 x 560mm	Black PU
Gas Height Range	425-540mm	
Finishes	Soft black PU seat and back with polished aluminium base	
Weight Rating	130kg	



PELLE MEDIUM BACK

Medium back executive chair in black pu leather, seat and back tilt with multi-lock, polished aluminium 5 star spider base.

PMB BL

Seat Size	500 x 560mm	Black PU
Gas Height Range	425-540mm	
Finishes	Soft black PU seat and back with polished aluminium base	
Weight Rating	130kg	



PELLE VISITOR CHAIR

Medium back executive visitor chair in black pu leather, with polished aluminium cantilever base.

PVM BL

Seat Size	500 x 560mm	Black PU
Finishes	Soft black PU seat and back with polished aluminium cantilever base	
Weight Rating	130kg	



CL3000 HIGH BACK

High back slimline black pu leather executive chair with seat and back tilt, 3-position lock mechanism with anti shock.

CL3000 H

Seat Size	505 x 510mm	Black PU
Gas Height Range	440-560mm	
Finishes	Soft black PU seat and back with polished aluminium spider base	
Weight Rating	120kg	



CL3000 MEDIUM BACK

Medium back slimline black pu leather executive chair with seat and back tilt, 3-position lock mechanism with anti shock.

CL3000 M

Seat Size	505 x 510mm	Black PU
Gas Height Range	440-560mm	
Finishes	Soft black PU seat and back with polished aluminium spider base	
Weight Rating	120kg	



CL3000 VISITOR

Slimline executive visitor chair with soft black pu leather seat and back, chrome upholstered arms and cantilever base.

CL3000 V

Seat Size	510 x 510mm	Black PU
Seat Height	460mm	
Finishes	Soft black PU seat and back with chrome cantilever base	
Weight Rating	120kg	



EXECUTIVE CHAIRS

The Rapidline executive chair range offers a combination of stylish looks, comfort and a choice of chair mechanisms to suit meeting, desk or task functions.

Ask your Rapidline distributor for advice on the best chair to suit your needs.

PU605 MEDIUM BACK

Medium back black PU executive chair with infinite lock, polished aluminium base with chrome arms and frame.

PU605M

Seat Size	485 x 460mm
Gas Height Range	490-610mm
Finishes	Black PU seat and back with chrome arms and polished aluminium base
Weight Rating	120kg

Black PU



PU605 HIGH BACK

High back black PU executive chair with infinite lock, polished aluminium base with chrome arms and frame.

PU605H

Seat Size	485 x 460mm
Gas Height Range	490-610mm
Finishes	Soft black PU seat and back with chrome arms and polished aluminium base
Weight Rating	120kg

Black PU



PU900 MEDIUM BACK

Medium back with upholstered black pu, single point lock, polished aluminium base and arms.

PU900M

Seat Size	520 x 435mm
Gas Height Range	460-545mm
Finishes	Soft black PU seat and back with polished aluminium base
Weight Rating	120kg

Black PU



PU900 HIGH BACK

High back with upholstered black pu, single point lock, polished aluminium base and arms.

PU900H

Seat Size	415 x 500mm
Gas Height Range	460-550mm
Finishes	Soft black PU seat and back with polished aluminium base
Weight Rating	120kg

Black PU



LUJO MEDIUM BACK

Medium back executive chair with built-in lumbar support, high grade synchro mechanism with flared arm rest design.

LUJO-MB RB

Seat Size	475 x 475mm
Gas Height Range	450-540mm
Finishes	Royal blue fabric with black fabric to underside of arm rest and polished aluminium base
Weight Rating	120kg

Blue



HARTLEY VISITOR

Black cantilever frame, adjustable arms and black mesh back visitor chair with comfortable padded fabric seat.

HARTLEY VISITOR

Seat Size	510 x 480mm
Back Height	485mm
Finishes	Black mesh back, and fabric seat with black frame
Weight Rating	135kg

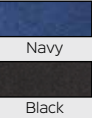


NOVA

Visitor or meeting chair with fabric seat and back, black powdercoated frame, stackable and linking.

NOVA

Seat Size	444 x 448mm
Back Height	338mm
Features	Stackable and linking SGS tested
Finishes	Navy, black or charcoal fabric
Weight Rating	110kg

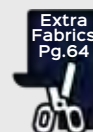


WMCC

Visitor chair with cantilever chrome base and arms, comfortable black mesh material and fabric seat.

WMCC

Seat Size	470 x 470mm
Seat Height	440mm
Back Height	500mm
Finishes	Black mesh back and fabric seat
Weight Rating	120kg

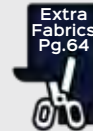


WMVBK

Visitor chair with comfortable mesh back and fabric seat. Chrome frame with curved plastic arm rests.

WMVBK

Seat Size	480 x 480mm
Back Height	480mm
Finishes	Black mesh back with fabric seat
Weight Rating	110kg



WV100 BL

Comfortable black fabric chair with chrome sled base, modern and stylish design.

WV100 BL

Seat Size	435 x 450mm
Back Height	390mm
Finishes	Black padded fabric seat and back with chrome sled frame
Features	Linking
Weight Rating	120kg



PMVBK

Black mesh back chair with plastic seat and back, stackable and linking chrome sled base and frame.

PMVBK

Seat Size	460 x 455mm
Back Height	300mm
Finishes	Black plastic back and seat with chrome sled base
Weight Rating	110kg



BREAKOUT AND VISITOR CHAIRS

MAUI

Polypropylene chair with white and slate grey frame. Grey fabric seat cover included.

MAUI

Seat Size	465 x 450mm
Back Height	395mm
Accreditation	BIFMA and GreenGuard Gold approved - made from 100% recyclable materials
Weight Rating	135kg



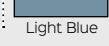
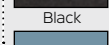
ALOHA

White elastic polypropylene breakout or meeting chair with silver legs. Seat covers extra.

ALOHA

Seat Size	430 x 430mm
Back Height	370mm
Optional Extras	Fabric seat covers ASP BK - Black ASP BU - Light Blue
Weight Rating	120kg

Chair Finish



COMFO

Visitor or meeting chair with black pu leather seat and back, chrome cantilever base and padded curved arm rests.

COMFO

Seat Size	510 x 490mm
Back Height	510mm
Finishes	Black pu leather seat and back with chrome frame and base
Weight Rating	110kg



VIRGO

Timber leg breakout chair with polypropylene shell, grey with black fabric seat pad or black with grey fabric seat pad.

VIRGO

Seat Size	440 x 440mm
Back Height	355mm
Finishes	Polypropylene plastic shell with soft upholstered seat pad
Weight Rating	110kg

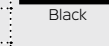
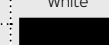


VIVID

Large polypropylene shell seat with powdercoated steel sled base with nylon glides. Available in black or white finishes.

VIVID

Seat Size	455 x 470mm
Back Height	390mm
Back Width	410mm
Finishes	White or black plastic
Weight Rating	120kg



FRAME CHAIR

Perforated back rest and polypropylene seat stacking visitor or conference chair, with linking feature and solid rod base.


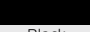

FRAME

Seat Size	455 x 420mm
Back Height	370mm
Finishes	Black
Certification	BIFMA Tested ANSI/ BIFMA X5.1
Weight Rating	120kg



LEO


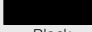

Plastic hospitality chair suitable for indoor or outdoor use, aluminium legs, black or white plastic.

LEO		
Seat Size	420 x 410mm	White
Back Height	420mm	
Finishes	White or black plastic with aluminium legs - Suitable for indoor or outdoor use	Black
Weight Rating	100kg	



TAURUS

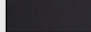

Indoor hospitality chair with chrome legs and back cut out feature, black or white plastic.

TAURUS		
Seat Size	435 x 430mm	White
Back Height	345mm	
Finishes	Plastic shell in white or black with chrome frame	Black
Weight Rating	110kg	



FERNANDO

Slyish black pu seat and back with chrome frame, cut out feature in back of chair.

FERNANDO		
Seat Size	425 x 420mm	Black PU
Back Height	480mm	
Finishes	Black pu leather seat and back with chrome frame	
Weight Rating	90kg	



ARIES BAR STOOL

Stylish black metal curved frame with polypropylene plastic seat pan available in black, grey or green finishes.

ARIES ST			
Seat Size	455 x 545mm	Black	Green
Seat Height	760mm		
Overall Height	853mm	Grey	
Finishes	Black frame with black, grey or green seat pan		
Weight Rating	110kg		



TAURUS BAR STOOL

Indoor hospitality stool with chrome base and polypropylene plastic curved seat with cut out back feature.

TAURUS STOOL		
Seat Size	435 x 455mm	Black
Seat Height	750mm	
Overall Height	1050mm	White
Finishes	Chrome frame with black or white seat	
Weight Rating	110kg	



VIRGO BAR STOOL

Modern bar stool with oak coloured frame, available with curved polypropylene plastic seat pan in black, grey or green.

VIRGO ST			
Seat Size	475 x 475mm	Black	Green
Seat Height	770mm		
Overall Height	820mm	Grey	
Finishes	Oak coloured frame with black, grey or green seat		
Weight Rating	110kg		



EDUCATIONAL CHAIRS AND STOOLS

P100

Polypropylene plastic stacking chair in black.

P100

Seat Size	450 x 370mm	Black
Back Height	405mm	
Finishes	Black polypropylene shell with black powdercoated frame	
Weight Rating	130kg	



V100

Comfortable black fabric visitor chair with black frame, stackable.

V100

Seat Size	450 x 450mm	Black
Back Height	300mm	
Finishes	Black fabric upholstered seat and back with black metal frame	
Weight Rating	120kg	



LAB CHAIR

Laboratory chair with moulded polyurethane contoured waterfall seat pan and back rest with seat and back tilt.

LAB CH

Seat Size	470 x 435mm	Black
Gas Height Range	420-540mm	
Finishes	Black back rest and seat with black nylon base	
Weight Rating	110kg	



DS DESK STOOL

400mm round seat desk stool, easy to clean black pu material with black spider base.

DS DESK

Seat Size	400 x 400mm	Black PU
Gas Height Range	450-570mm	
Finishes	Black pu material seat with black spider base	
Weight Rating	100kg	



DS COUNTER STOOL

400mm round seat counter stool with chrome drafting ring, easy to clean black pu material and black spider base.

DS COUNTER

Seat Size	400 x 400mm	Black PU
Gas Height Range	650-870mm	
Finishes	Black pu material seat, black spider base with chrome drafting ring	
Weight Rating	100kg	



LAB STOOL

Laboratory stool with moulded polyurethane contoured waterfall seat pan, tilting back rest with adjustable drafting ring.

LAB ST

Seat Size	460 x 440mm	Black
Gas Height Range	640-850mm	
Finishes	Black back rest and seat with chrome plated drafting ring	
Weight Rating	110kg	



WIMBLEDON

Black plastic seat and back, chrome sled base, linking and stackable with range of optional extra's also available.

WIMBLEDON

Seat Size	425 x 430mm	Black Plastic
Back Height	245mm	
Optional Extras	Wimbledon chair available with arms, or tablet arm, back and seat pad	
Weight Rating	120kg	



ZOLA

Black plastic seat and curved back, with chrome stackable frame.

ZOLA

Seat Size	440 x 460mm	Black Plastic
Back Height	200mm	
Finishes	Black plastic back and seat with chrome frame	
Weight Rating	100kg	



WIMBLEDON CHAIR OPTIONAL EXTRAS



WITH ARMS



TABLET ARM



SEAT AND BACK PAD



CUSTOM UPHOLSTERY



ZING

Large black plastic back and seat with chrome frame, linking and stackable.

ZING

Seat Size	465 x 430mm	Black Plastic
Back Height	370mm	
Finishes	Black plastic back and seat with chrome frame as standard. Seat and back pad available in range of colours	
Weight Rating	120kg	

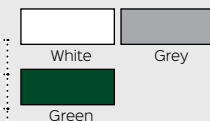


PIPEE

Polypropylene plastic stacking chair, holds up to 150kg under intended use. Available in 3 colours with high luster shine.

PIPEE

Seat Size	400 x 380mm
Back Height	410mm
Finishes	White, grey and green
Weight Rating	150kg



Z TROLLEY

Trolley available for PMVBK, ZOLA, ZING, WIMBLEDON and FRAME chairs.

ZTROLLEY

Finishes	Black with white plastic wheels	Black
Warranty	3 Years	



Chair and Screen Upholstery

For a wider colour selection than our standard express range, we can upholster certain products in a range of extended house fabrics, or your fabric of choice.

CHAIR OPTIONS

EM300
EC070CM
EG100
PO500
MOTION
GESTURE
LUMINOUS
ERGO
HARTLEY TASK
HARTLEY VISITOR
KAL
ZOOM
WMCC
WMBK
WIMBLEDON (Back and Seat Pad)
CONNECT OTTOMAN
MARS OTTOMANS
ZING (Back and Seat Pad)



SCREEN OPTIONS

RAPID SCREEN
(Fabric Top Half of Screen Panel)

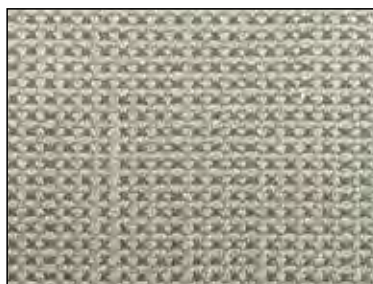
INFINITY FABRIC SCREENS

FREESTANDING ACOUSTIC
SCREENS

HOUSE FABRICS



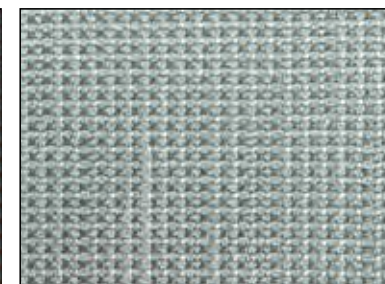
MIST



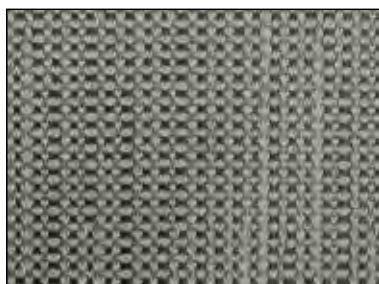
PUMICE



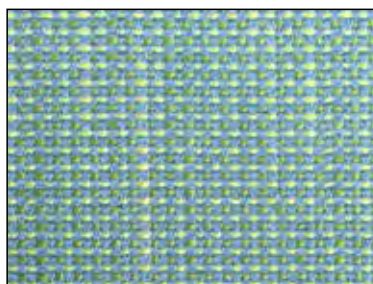
ESSENCE



SEAFOAM



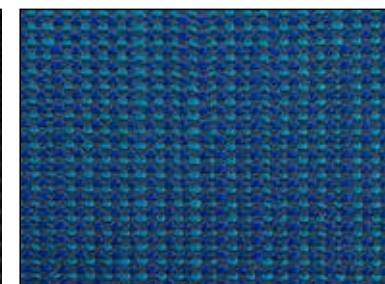
PEBBLE



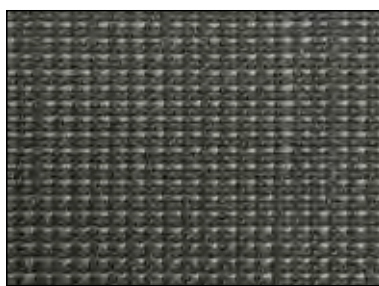
SPRAY



CASCADE



INK



STEEL



CARBON



MARINE



NAVY



ONYX

Lead Times and Additional Charges May Apply

NEW



Welcome to the improved Rapidline presentation range.

Not only has the quality of the product been improved but so has the packaging, assisting with damage free storage and transportation. This helps us offer up to a 25 year warranty on selected presentation products.

The range now has extended options offering porcelain whiteboards for a longer life and superior clean, and glassboards for those users looking for an impressive, sharp presentation.

GLASSBOARD

Super clear 4mm toughened glassboard with magnetic surface.
Galvanised steel backing with 25mm chrome fittings and clear pen tray.

GB96, GB129, GB159, GB1512, GB189,
GB1812, GB2112 or GB2412

Sizes	900 x 600mm, 1200 x 900mm, 1500 x 900mm, 1500 x 1200mm, 1800 x 900mm, 1800 x 1200mm, 2100 x 1200mm and 2400 x 1200mm
Depth	15mm
Features	Compatible with any whiteboard markers or liquid chalk markers (not included).

White



LECTERN

Heavy duty lectern with angled top shelf for presentations and second shelf for storage in black powdercoated finish.

LCT12 BL

Frame Size	445 x 450mm
Height	1200mm
Top Shelf Size	600mm W x 400mm D
Second Shelf Size	550mm W x 260mm D
Features	Detachable adjustable battery powered LED light

Black

NEW



PRESENTATION RANGE

STANDARD WHITEBOARD

Wall mounted aluminium framed magnetic whiteboard, pen tray, concealed corner fixing, acrylic polyester resin.

W96, W129, W1212, W159, W1512, W189, W1812, W219, W2112 or W2412

Sizes	900 x 600mm, 1200 x 900mm, 1200 x 1200mm, 1500 x 900mm, 1500 x 1200mm, 1800 x 900mm, 1800 x 1200mm, 2100 x 900mm, 2100 x 1200mm and 2400 x 1200mm
Depth	15mm

White



PORCELAIN WHITEBOARD

Wall mounted porcelain whiteboard available in a range of sizes.

PWB96, PWB129, PWB1212, PWB159, PWB1512, PWB189, PWB1812, PWB2112, PWB2412, PWB3012 or PWB3612

Sizes	900 x 600mm, 1200 x 900mm, 1200 x 1200mm, 1500 x 900mm, 1500 x 1200mm, 1800 x 900mm, 1800 x 1200mm, 2100 x 1200mm, 2400 x 1200mm, 3000 x 1200mm and 3600 x 1200mm
Depth	15mm

White



PINBOARD

Wall mounted pinboard with concealed corner wall fixings, in blue or grey fabric

PIN96, PIN129, PIN1212, PIN159, PIN1512, PIN189, PIN1812 or PIN2412

Sizes	900 x 600mm, 1200 x 900mm, 1200 x 1200mm, 1500 x 900mm, 1500 x 1200mm, 1800 x 900mm, 1800 x 1200mm and 2400 x 1200mm
Depth	15mm
Finish	Blue or grey fabric with silver frame

Blue

Grey



MOBILE WHITEBOARD

Double sided pivoting mobile whiteboard with pen tray.

M129, M159, M1512, M189 or M1812

Sizes	1200 x 900mm, 1500 x 900mm, 1500 x 1200mm, 1800 x 900mm and 1800 x 1200mm
Frame Depth	15mm
Overall Depth	550mm
Warranty	8 Years

White



MOBILE PORCELAIN WHITEBOARD

Double sided pivoting mobile porcelain whiteboard with pen tray.

PMW129, PMW1512 or PMW1812

Sizes	1200 x 900mm, 1500 x 900mm, 1500 x 1200mm, 1800 x 900mm and 1800 x 1200mm
Frame Depth	15mm
Overall Depth	550mm
Warranty	25 Years

White



CORKBOARD

Composite corkboard with aluminium frame and concealed corner wall fixings, suitable for pins or stickers.

C96, C129, C1212, C159, C1512, C189, C1812 or C2412

Sizes	900 x 600mm, 1200 x 900mm, 1200 x 1200mm, 1500 x 900mm, 1500 x 1200mm, 1800 x 900mm, 1800 x 1200mm and 2400 x 1200mm
Depth	15mm
Finish	Composite cork

Cork



ECO PANEL SLIDE ON SCREEN

Slide on divider screen with pinnable surface in polyester eco friendly fibre.

EPS60 BK

Size	650 x 300mm
Thickness	27mm
Compatibility	Compatible with deluxe rapid infinity, rapid span, rapid worker and rapid manager ranges

Black



ECO PANEL SCREEN

Desk mounted screen with screw plate fixing in pinnable surface made from polyester eco friendly fibre.

EPS098 BK, EPS119 BK or EPS149 BK

Size	890 x 285mm, 1190 x 285mm or 1490 x 285mm
Thickness	27mm
Compatibility	Compatible with rapid infinity, rapid span, rapid worker and rapid manager ranges

Black



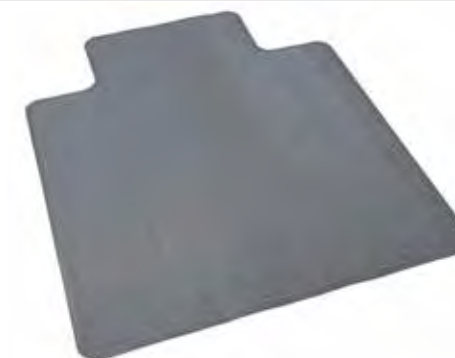
CHAIR MAT

Dimpled chair mat for use on carpets, smooth chair mat for use on hard floors.

CHAIR MAT

MAT S - Small Dimpled	915mm x 1200mm x 2mm
MAT L - Large Dimpled	1140mm x 1350mm x 2mm
MAT SM S - Small Smooth	915mm x 1200mm x 2mm
MAT SM L - Large Smooth	1140mm x 1350mm x 2mm

Clear



ACOUSTIC SCREEN

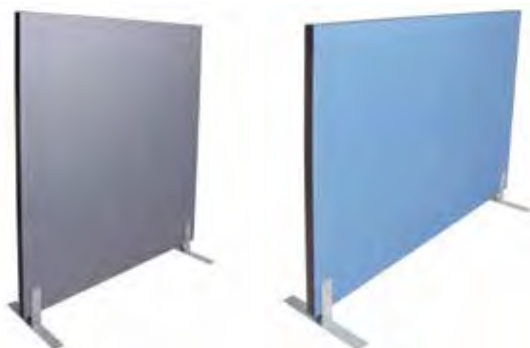
Free standing dividing office panels, in 50mm thick, pinnable fabric with black pvc edging and silver freestanding feet.

A1515, A1518, A1815 or A1818

Width x Height	1500 x 1500mm, 1500 x 1800mm, 1800 x 1500mm and 1800 x 1800mm
Thickness	50mm
Finishes	Blue or grey fabric
Warranty	5 Years

Blue

Grey



UTILITY TROLLEY

Utility trolley with 3 tiers of storage space and castor wheels for ease of movement. Perfect to be moved around any office.

TR3

Width	800mm
Depth	600mm
Height	900mm
Finish	Ironstone shelves with black frame
Weight Rating	100kg

Ironstone



CORNER LOZENGE

Converts desk and return to a corner workstation by adding diagonal for user to sit at, to fit 25mm or 33mm deep tops.

LOZENGE25 or LOZENGE33

Size	250mm W x 480mm L
Depth	25mm or 33mm D
Compatibility	Melamine desk and return with 25mm or 33mm D top
Finish	Graphite

Graphite



STORAGE



GO STEEL SLIMLINE MOBILE PEDESTAL

Slimline, lockable mobile pedestal ideal for smaller workstations to allow for maximum under desk leg room.

GSP3 WC or GSP3 BL

Size	300 x 472mm	White China
Height	610mm	Black
Features	Flush drawer front which stores foolscap files back to front, ball bearing runners and fifth wheel for stability	
Optional Extra	Keyed alike locks available	



GO STEEL MOBILE CADDY

Flush front fully lockable mobile pedestal and tambour door section with centre shelf, ideal for hot desks or as desk return.

GCAD L (Left) or GCAD R (Right)

Size	1050 x 460mm	White
Height	570mm	Black
Orientation	GCAD L - Tambour door on left hand side or GCAD R - Tambour door on right hand side	
Warranty	10 Years	



GO STEEL MOBILE PEDESTAL

Lockable mobile pedestal with full extension ball bearing runners and flush drawer front.

GMP3 WC, GMP3 BS, GMP3 PS or GMP3 GR

Size	460 x 472mm	White China	Black Satin
Height	610mm	Precious Silver	Graphite Ripple
Features	Flush drawer front which stores foolscap files side to side, ball bearing runners and fifth wheel for stability		
Optional Extra	Keyed alike locks available		



GO STEEL FILING CABINET

Heavy duty filing cabinets, fully riveted with ball bearing runners and 40kg weight capacity per drawer.

GFCA2, GFCA3 or GFCA4

Size	460mm W x 620mm D	White China	Black Ripple
Height	2 drawer - 705mm 3 drawer - 1016mm 4 drawer - 1321mm	Silver Grey	Graphite Ripple
Finishes	White china, black ripple, silver grey or graphite ripple		



ETERNITY SLIMLINE MOBILE PEDESTAL

Slimline powdercoated steel mobile pedestal with 2 personal drawers and 1 file drawer, fifth wheel for stability and anti-tilt.

EMP3 WB

Width	300mm
Depth	535mm
Height	580mm
Warranty	10 Years



GO STEEL LATERAL FILING CABINET

Heavy duty lateral filing cabinets, riveted construction for extra strength, anti-tilt locking, 2 rows of folders per drawer.

GLF2, GLF3 OR GLF4

Size	900mm W x 473mm D	White China
Height	2 drawer - 705mm 3 drawer - 1016mm 4 drawer - 1321mm	Black Satin
Finishes	White china or black satin	
Warranty	10 Years	



STEEL STORAGE

OFFICE LOCKER

Space efficient storage system for offices. 6 lockers per unit featuring a removable shelf and mail slot on door.

OFL138 WC

Size	800 x 486mm	White China
Height	1375mm	
Features	6 lockable individual compartments with name holder fitted to each door. 4 easy adjustable levelling feet, unit finished in white china powdercoat.	



BOLTLESS SHELVING

Easy to assemble boltless shelving unit with heavy duty metal shelves, available in 2 widths.

GV189 and GV1812

Size	914mm W or 1220mm W	Silver Grey
Depth	457mm	
Height	1830mm	
Features	50kg weight rating per shelf	
Warranty	10 Years	



GO STEEL CUPBOARD

GO steel flush lock cupboard tested to british standards, supplied assembled or flat pack with 2 sets of keys.

GCA10, GCA18 and GCA20

Size	910mm W x 450mm D	White China	Silver Grey
Height	GCA10 - 2 shelves - 1015mm GCA18 - 3 shelves - 1830mm GCA20 - 4 shelves - 2000mm	Graphite Ripple	
Optional Extra	GCWSG Shelf and coat rail as optional extra for use in cupboard		



SHELVING UNIT

Flat packed, clip together easy to assemble shelving unit which includes 5 adjustable shelves in silver grey finish.

GSC9422

Size	910mm W x 400mm D	Silver Grey
Height	2200mm	
Features	40kg weight rating per shelf	
Finishes	Silver grey	
Warranty	10 Years	



GO STEEL WARDROBE

Lockable GO steel swing door wardrobe featuring hanging rail and 3 shelves creating 4 separate storage compartments.

GWA18

Size	910mm W x 450mm D	Silver Grey
Height	1830mm	
Features	Hanging rail and 4 separate shelf compartments	
Warranty	10 Years	



MESH DOOR CUPBOARD

Foldable 2 door metal mesh security cupboard, supplied flat pack with 5 adjustable shelves and padlock latch.

208-F2DMSC

Size	900mm W x 450mm D	Silver Grey with Yellow Doors
Height	1850mm	
Finishes	Silver grey cupboard with yellow metal mesh doors and padlock latch on front (padlock not included)	



TAMBOUR DOOR CUPBOARD

Tambour door cupboards for storage with easy glide track and magnetic anti slam rail which keeps doors closed. Fully riveted for extra strength, locking with 2 keys (master series), optional extra shelves and accessories available.

GTD109, GTD129, GTD199, GTD1012, GTD1212 or GTD1912

Width	900mm or 1200mm	<input type="checkbox"/> White China <input type="checkbox"/> Black
Depth	473mm	
Height	1016mm, 1200mm or 1981mm	
Optional Extras	Sold as tambour door cupboard unit only, shelves sold separately	



NEW

SLOTTED SHELF AND DIVIDERS

Slotted shelf for use in tambour door cupboards to accept separate slotted shelf dividers, reinforced shelf for durability.

GG09 SLOT, GG12 SLOT SHELF and GS7D Dividers

Shelf	GG09SLOT - for 900mm wide unit GG12SLOT - for 1200mm wide unit	<input type="checkbox"/> White China <input type="checkbox"/> Black
Dividers	GS7D - pack of 5 slotted shelf dividers sold separately	
Features	Rear support for dividers and reinforced shelf for heavy duty durability and stability	



PLANTER BOX

Planter box with 3 holes for plants and incorporated drip tray, use on top of tambour door cupboards or lateral filing cabinets.

PB900 and PB1200

Width	900mm or 1200mm	<input type="checkbox"/> White China <input type="checkbox"/> Black
Depth	473mm	
Height	230mm	
Features	Fully assembled with incorporated drip tray, space for 3 x 200mm plant pots (plants and pots not included)	



NEW

ROLL OUT FILING FRAME

Roll out filing frame for use in tambour door cupboards, store foolscap folders and roll out for easy access to files.

GG09FF and GG12FF

Width	GG09FF - 750mm width for 900mm wide unit - can take 1 row of foolscap folders GG12FF - 1050mm width for 1200mm wide unit - can take 2 rows of foolscap folders	<input type="checkbox"/> White China <input type="checkbox"/> Black
Finishes	White china or black	



PLAIN SHELF

Adjustable static plain shelf for use in tambour door cupboards, available in 2 different widths and finishes.

GTD900 and GTD1200

Width	GTD900 - for 900mm wide unit GTD1200 - for 1200mm wide unit	<input type="checkbox"/> White China <input type="checkbox"/> Black
Depth	470mm	
Height	30mm	
Finishes	White china or black	
Warranty	10 Years	



PULL OUT SHELF

Pull out shelf for use in tambour door cupboards, shelf slides out for easy operation to find or work on files.

GG09PS and GG12PS

Width	GG09PS - for 900mm wide unit GG12PS - for 1200mm wide unit	<input type="checkbox"/> White China
Depth	470mm	
Height	30mm	
Finishes	White china only	
Warranty	10 Years	



MOBILE STORAGE

Space efficient method of bulk storage with base mounted false floor, easy to level with adjustable feet.

Mobile shelving unit available in 2 different widths and 4, 6 or 8 bay configuration.

Add on extra double bays or additional shelves in both widths at anytime, to extend size and storage capacity of mobile shelving unit.

White powdercoated finish to unit for modern style with charcoal grey base.



4 BAY MOBILE SHELVING

RMS4900 and RMS41200

Width	980 or 1280mm
Length	2670mm
Height	2150mm
Shelf Capacity	110kg shelf capacity
Warranty	10 Years



6 BAY MOBILE SHELVING

RMS6900 and RMS61200

Width	980 or 1280mm
Length	3560mm
Height	2150mm
Shelf Capacity	110kg shelf capacity
Warranty	10 Years



8 BAY MOBILE SHELVING

RMS8900 and RMS81200

Width	980 or 1280mm
Length	4450mm
Height	2150mm
Shelf Capacity	110kg shelf capacity
Warranty	10 Years



Melamine lockers offer a personal storage solution that blends into your space. Use in both office and educational applications. Each locker includes 2 x keys per lock.

Various internal features in each compartment. E1 rated moisture resistant melamine and MDF doors with soft close hinges, and adjustable levelling feet to each unit.



SINGLE DOOR LOCKER

WRML-305/1

Width	305mm
Depth x Height	455mm x 1850mm
Finishes	MR Melamine / MDF
Features	1 x Hat shelf and 1 x hanging rail per compartment. Includes 2 x keys per lock

2 DOOR LOCKER

WRML-305/2

Width	305mm
Depth x Height	455mm x 1850mm
Finishes	MR Melamine / MDF
Features	1 x Hanging rail per compartment. Includes 2 x keys per lock

3 DOOR LOCKER

WRML-305/3

Width	305mm
Depth x Height	455mm x 1850mm
Finishes	MR Melamine / MDF
Features	Empty compartment. Includes 2 x keys per lock

4 DOOR LOCKER

WRML-305/4

Width	305mm
Depth x Height	455mm x 1850mm
Finishes	MR Melamine / MDF
Features	Empty compartment. Includes 2 x keys per lock

STEP DOOR LOCKER

SDWRML380/2

Width	380mm
Depth x Height	455mm x 1850mm
Finishes	MR Melamine / MDF
Features	1 x Hanging rail per compartment. Includes 2 x keys per lock



STEEL LOCKERS

Steel lockers offer an easy way to store personal belongings.

Choose from single, 2 or 4 door options to suit your requirements, or a step locker which provides 2 hanging spaces.



SINGLE DOOR LOCKER		2 DOOR LOCKER		4 DOOR LOCKER		STEP LOCKER	
GL305/1 and GL380/1		GL305/2 and GL380/2		GL305/4 and GL380/4		STEP LOCKER	
Width	305mm or 380mm	Width	305mm or 380mm	Width	305mm or 380mm	Width	380mm
Depth x Height	455mm x 1830mm	Depth x Height	455mm x 1830mm	Depth x Height	455mm x 1830mm	Depth x Height	455mm x 1830mm
Finishes	305mm - White china or silver grey 380mm - Silver grey only	Finishes	305mm - White china or silver grey 380mm - Silver grey only	Finishes	305mm - White china or silver grey 380mm - Silver grey only	Finishes	Silver grey only
Features	Riveted construction for extra strength, vented doors for ventilation, fitted with hat shelf and coat rail storage	Features	Riveted construction for extra strength, vented doors for ventilation, fitted with coat hook in each compartment	Features	Riveted construction for extra strength, vented doors for ventilation, full length stiffeners fitted to each door for rigidity	Features	Riveted construction for extra strength, vented doors for ventilation, allows 2 hanging spaces per locker, hanging rail included



LOCKER STAND

Locker stand to bank 2 or 3 lockers, suitable for 305mm wide lockers only. Silver powdercoated frame and black levelling feet.

SB2305 and SB3305

Width	SB2305 - 610mm W for 2 lockers SB3305 - 915mm W for 3 lockers	Silver Grey
Depth x Height	455mm x 150mm	
Features	Raise lockers off floor to allow for easy cleaning underneath and extra stability when joined together	



SLOPING TOP

Sloping top in silver grey for use with either a single locker or bank of 3 lockers. Suitable for 305mm wide lockers only.

G12830 and G32830

Width	G12830 - for single 305mm wide locker G32830 - for bank of 3 x 305mm wide lockers	Silver Grey
Height	270mm	
Features	Neat and easy to clean 30° degree sloping top for single locker or bank of 3 lockers, suitable for 305mm wide lockers only	



SEAT AND STAND

Seat and stand to suit bank of 2 or 3 lockers, suitable for 305mm wide lockers, powdercoated frame and oak style seat.

S+S2305 and S+S3305

Width	S+S2305 - 610mm W for 2 lockers S+S3305 - 915mm W for 3 lockers	Silver Grey
Depth x Height	700mm x 350mm	
Features	Raise lockers off floor and add a bench seat in front for use in locker rooms, schools, gyms and other applications	



DIGITAL LOCK

Digital keypad code lock to be used with steel or melamine lockers as optional extra. Public or private lock programming.

DIGITAL LOCK

Finish	Black	Black
Features	Public or private lock code programming for one time or permanent use Use with both steel or melamine lockers *batteries not included*	



BENCH SEAT

Single sided bench seat with light oak style modified wood slats, silver coated frame and black levelling feet.

BS1000

Width	1000mm	Silver Grey
Depth	360mm	
Height	400mm	
Features	Sturdy bench seat for use in locker rooms, schools, gyms and other applications	



BUTTERFLY LOCK

Butterfly lock for use with all GO Steel lockers to enable padlock facility on doors (padlock not included).

BUTTERFLY

Padlock	Suitable for use with padlock shafts	Chrome
Requirements	6mm-8mm and shackle 25mm-30mm	
Finish	Chrome	
Features	Supplied fitted to lockers when ordered simultaneously	
Warranty	10 Years	





WORKSTATIONS - FURNITURE - SEATING - STORAGE - ACCESSORIES